



SAGINAW COMMUNITY FOUNDATION

it takes a  
**village**



2018 ANNUAL REPORT

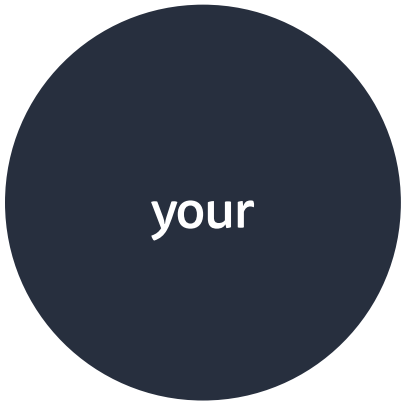
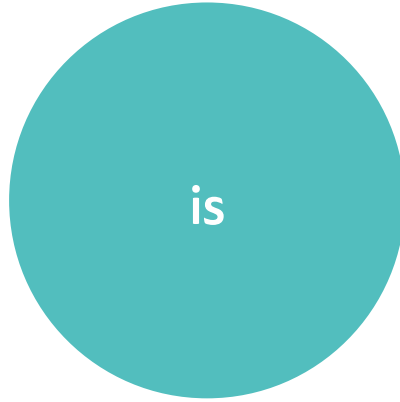




"The greatness of a community is most accurately measured by the compassionate actions of its members."

C O R E T T A   S C O T T   K I N G





Everyone has their own passion – causes that matter the most. Education of our youth, economic development, public safety, and the health and wellbeing of residents – to name a few. At Saginaw Community Foundation, we are uniquely positioned to connect donors to the causes they are most passionate about.

For 34 years, we have supported hundreds of organizations and those organizations have helped support thousands of individuals across Saginaw County.

***How can one organization do so much?***

We bring together the financial resources of individuals, families and local businesses to support nonprofits in our community. We act as a convener by bringing groups and individuals together to reach common goals. We're a place where diverse interests and different voices come together to make real change happen.

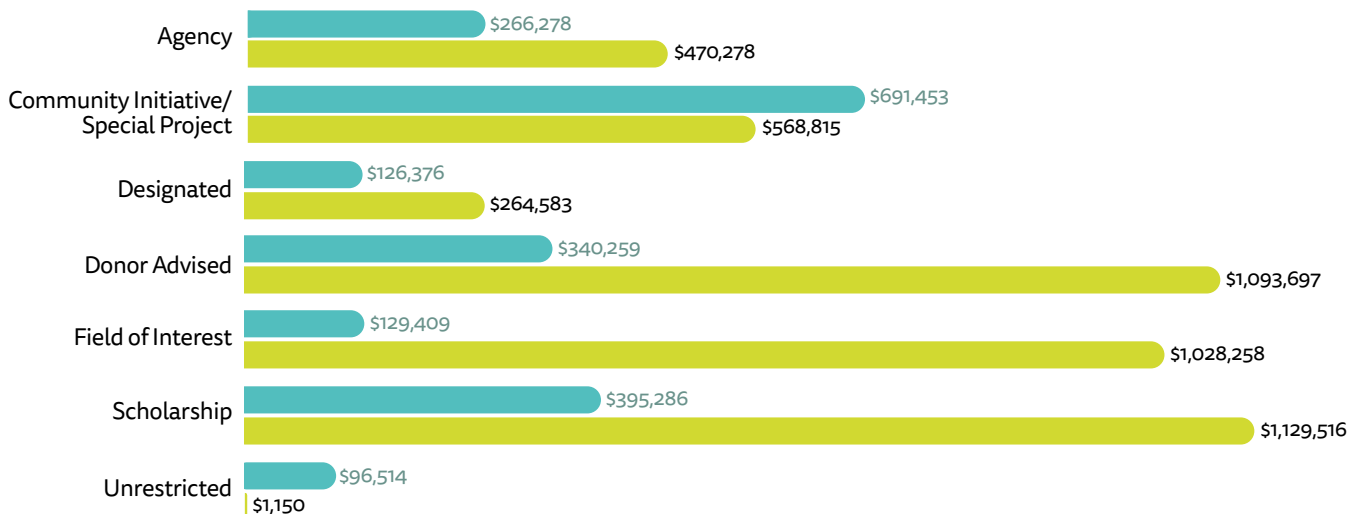
Saginaw Community Foundation has one mission: **to fulfill donor wishes and enable community initiatives to come to life, now and forever.** When we all work together – neighbor helping neighbor – we'll make our village a place we are all proud to call home.

# year in Review

Here's a quick look at 2018 at Saginaw Community Foundation. Later in this report you will find a detailed financial review (see page 27) as well as a complete list of contributors (see page 36).

## Where Donors Have Directed Their Gifts

by fund type, 2017 vs. 2018 ■ 2017 (total: \$2,045,575) ■ 2018 (total: \$4,556,297)



## Number and Types of Funds

### Agency

Enables nonprofit organizations to establish funds for their benefit within the foundation

### Community Initiative/Special Project

Established to provide support for specific community projects or initiatives

### Designated

Established by people who want to support a specific organization or accomplish a specific purpose

### Donor Advised

Enables donor to be personally involved in grantmaking, subject to board approval

### Field of Interest

Administered by the foundation to benefit a general field of interest

### Scholarship

Provides financial support for students seeking higher education

### Unrestricted

Administered by the foundation to meet the urgent and changing needs in Saginaw County

## Assets by Donor Interest Area

As of December 31, 2018



**Animal Related**  
**\$368,242**



**Arts and Culture**  
**\$4,649,769**



**Community Improvement**  
**\$2,233,801**



**Education**  
**\$23,489,858**



**Environment**  
**\$162,469**



**Food/  
Nutrition**  
**\$777,511**



**Health**  
**\$2,465,341**



**Housing**  
**\$778,699**



**Human Services**  
**\$5,777,404**



**MMBO<sup>1</sup>**  
**\$16,101**



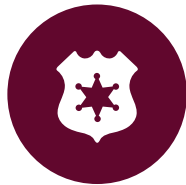
**Nonclassifiable<sup>2</sup>**  
**\$12,723,957**



**Philanthropy**  
**\$1,834,176**



**Public Benefit**  
**\$1,706,251**



**Public Safety**  
**\$313,523**



**Recreation**  
**\$2,461,771**



**Religion**  
**\$282,872**



**Science/  
Technology  
Research**  
**\$38,143**



**Youth  
Development**  
**\$2,643,025**

<sup>1</sup>Mutual/Membership Benefit Organization

<sup>2</sup>Defined as funds that support more than one interest area

## Asset History

Five-year, 2014-2018



# Friends ...

Another amazing year has gone by and the Saginaw Community Foundation is delighted to share with you our 2018 Annual Report, highlighting our contributions to the communities of Saginaw County. Thank you for allowing us to serve your village!

Throughout the year, the SCF Board of Directors and Staff have dedicated a considerable amount of focus on how we might have the greatest impact in our communities. Stemming from many discussions and careful deliberation of our community's needs, the SCF Board decided the Foundation should focus on addressing the issue of poverty. The decision to impact poverty in Saginaw County came with the understanding that we would have to approach it one step at a time, one piece at a time.

To focus our efforts, the Board agreed on the topic of education –specifically early literacy – as the first path on our journey. Choosing literacy as our first step was driven by new state legislation regarding 3<sup>rd</sup> grade literacy proficiency and recent M-STEP testing that showed Saginaw County is home to some of the lowest 3<sup>rd</sup> grade reading proficiencies in the state.

Starting with a lesson led by one of our own Board members, Kathy Stewart, Saginaw Intermediate School District

Superintendent, the Board learned about how the leaders in our community are getting ready to be compliant with the new laws. As a result of our learning session, the Board supported the funding of an additional Literacy Coach with the aim to enhance the support for Saginaw County youth.

The Saginaw Intermediate School District hired Tia Hahn as a Literacy Coach where she will focus on two priority areas. The first priority area is family and community engagement in the area of literacy. In this priority area, Tia continued two initiatives that began last spring, Books on Buses and Literacy Pop-Up Kits, and she established relationships with a variety of community partners. The second priority area will provide professional learning opportunities to the 12 school districts in the Saginaw Intermediate School District.

While large commitments – like funding a new Literacy Coach – are necessary, the Board and Staff recognized a smaller project supporting literacy too. SCF Staff and Board members identified Little Free Libraries as a small, but mighty, tool to impact reading in Saginaw County. Little Free Library, a nationally recognized program, plays an essential role in encouraging a love of reading by

**René S. Johnston** (left)  
**Mamie T. Thorns, Ph.D.** (right)





providing 24/7 access to books in communities everywhere. The SCF Staff and Board recognized local communities without a Little Free Library and committed funding to build and stock a Little Free Library for those without, and supplement others in need of books.

As always, SCF is an avid supporter of educational attainment in Saginaw County. Our general grantmaking has continued to support a variety of programs across the county and we continue to expand and improve on our scholarships. In fact, we've had several business and corporate partners establish scholarships with an emphasis on career technical education (CTE). Considering that many CTE programs don't always align with traditional higher education schedules, the scholarship staff at SCF will be working to develop a scholarship application process that will best serve individuals as they pursue a hands-on career pathway. Additionally, our Grants for Excellence program supported a number of dedicated and inventive educators from across the county as they brought special projects into the classroom.

In a year of exciting changes, we are happy to announce that SCF made its first social impact investment through our Invest for Community Impact program. This type of investment is a new tool for foundations to continue to make positive change in our communities. Continuing with the theme of supporting education, SCF made a \$400,000 investment to help kickstart the establishment of Saginaw Covenant Academy – a year-round high school for students ages 16-22 who have previously dropped-out or are at-risk of not graduating on time. Opening their doors in November 2018 with 13 students enrolled, Saginaw Covenant Academy has grown to nearly 100 students enrolled with five set to graduate with an official high school diploma in June 2019. While students are held to the standards for graduation by the State of Michigan,

including a 10<sup>th</sup> grade literacy proficiency and 18 credits of instructional time, Saginaw Covenant Academy prides itself in being supportive of its student's education and well-being. We are extremely proud of this investment and the immediate impact it has already made in our village.

Finally, the Saginaw Community Foundation fully recognizes that the impact we make in our community is not possible without the many donors who entrust us with their philanthropic investments and visions. We are proud that our donors represent individuals, families, institutions, organizations, municipalities, corporations, and foundations from our region and beyond. One of these philanthropic investments was from the Dow Corning Foundation following its dissolution. The Dow Corning Foundation established field-of-interest funds of \$1 million at Bay Area, Midland Area, and Saginaw Community Foundations to support projects that provide recreation and healthy experiences to residents. The fund, to be completely spent down over the next few years, is committed to supporting the construction, maintenance, and repair and/or replacement of community assets promoting a healthier lifestyle and providing places where people can come together. In 2018, SCF was able to make an initial \$100,000 grant from this new fund to support a Saginaw City and County effort to make improvements to Ojibway Island, Wickes Park, and Celebration Park.

Thank you again for letting the Saginaw Community Foundation serve your village with the goal of making an everlasting impact – for good, for ever.

Sincerely,



Renee S. Johnston  
President & CEO



Mamie T. Thorns, Ph.D.  
Board Chair

GRANT HIGHLIGHTS

*agriculture*

# ACCESSIBILITY CAREER TRADITION

In southern Saginaw County, barriers are being broken.

A new exhibition opportunity at the Saginaw County Fair has closed a gap for area youth allowing virtually everyone to participate in the fair.

Students at Chesaning Union Schools enrolled in Agri-Sciences studies are gaining insight into viable career possibilities in agriculture with a new state-of-the-art facility for livestock and plants.

Rooted in agricultural traditions, these new projects are sure to reap great rewards now and in the future thanks to grant support from your community foundation.

## **Saginaw Valley Agricultural Association**

Saginaw County Fair Dog  
Program

*Grant Award*  
**\$10,000**

\$5,540 from the FORCE Youth  
Advisory Fund;  
\$3,460 from the SCF  
Unrestricted Fund;  
\$1,000 from the YWCA Fund  
for Women and Children

## **Chesaning Union Schools**

Chesaning Agriscience  
Expansion

*Grant Award*  
**\$16,150**

\$15,000 from the SCF  
Unrestricted Fund;  
\$1,150 from the YWCA Fund  
for Women and Children

## Saginaw County Fair Dog Program

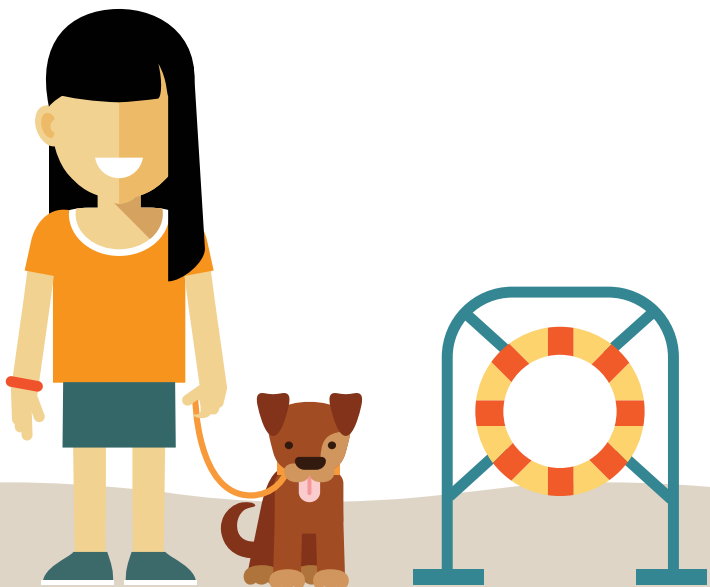
For many youth in our area, showing and presenting livestock – from pigs to sheep to cows – has been a long-rooted tradition at the Saginaw County Fair. But for some, there are barriers that prevent participation.

Historically, only individuals directly involved with livestock or having the ability to house and care for livestock has created an unfortunate economic and capacity gap for all to participate.

To address this gap, a 4H club – Pawsome Pups – was formed and lead the way to bring a dog program to the Saginaw County Fair. The prospect of youth and adults exhibiting and competing in the Saginaw County Fair Dog Program opens a unique opportunity to involve virtually everyone in being able to participate in the fair. By introducing dogs to the fair, barriers are erased as many individuals either have a dog or know someone with a dog thereby enabling people from all economic backgrounds to participate.

A \$10,000 grant from Saginaw Community Foundation helped with necessary renovations to repurpose a barn at the fairgrounds for the dog program as well as acquire the proper dog show equipment like show ring fencing, agility course obstacles, and benching tables.

The Saginaw County Fair is now only the 2<sup>nd</sup> fair in Michigan to have its own dog show barn. Future plans include making the dog barn into a hub for area dog shows to take place. 4H Clubs and local dog trainers will be able to utilize the facility as well as the Saginaw County Fair hosting UKC, AKC and local “fun matches”.



## Chesaning Union Schools Agri-Science Expansion

It is often a long, muddy trek to reach the Agri-Sciences Barn at Chesaning Union High School. The nearly 40 year-old barn is outdated and undersized, greatly reducing the livestock that can be housed and the types of projects student can perform. Time allotted for class instruction is cut short due to the lengthy walk time from the school to the barn.

With grant support in 2018 from SCF, the program is about to change with the construction of a barn and greenhouse which will meet all ADA requirements. The new facility is located just 100 feet from the classroom with paved surfaces from the classroom to the barn along with paved surfaces in the barn allowing for barrier-free access.

Agriculture is one of Michigan's top three industries with close to 20% of our population employed in agriculture. Agriculture in more than just farming. It is a dynamic, ever evolving industry with more than 300 skilled jobs which require students to have hands on experiences and often times, college courses or vocational training. A shortage exists of qualified individuals to fill these roles. With an average of 120 students enrolling in the Agrisciences program each school year, the updated facility will better prepare students for the future.

Construction of the facility will collaborate with the skilled trades program at Chesaning Union High School. Skilled trades students will have the opportunity to assist in finishing the construction and installation of utilities (wiring and plumbing) in the barn.

The Agri-Sciences program at Chesaning Union High School was founded in 1937 and is recognized at both a state and national level as a complete agri-science program by offering leadership opportunities through the FFA (formerly the Future Farmers of America) and offering hands on learning through the current facilities. The planned facilities will greatly increase those hands on learning opportunities.

# WELLNESS GROWTH EMPOWERMENT

Community. Sometimes it is defined as a place where people live, work, or play. It could also be defined by identity (a particular group), affinity (people working together with a common goal), or affiliation (shared experiences and values).

In St. Charles, a recreation revitalization has sparked a new vision for a popular park destination to benefit residents and visitors alike.

Individuals with a knack for gardening are teaching others how to grow healthy produce in Kochville Township.

## **Village of St. Charles**

Coal Miners' Park Universal  
Play Initiative

*Grant Award*  
**\$50,000**

from the SCF Unrestricted Fund

## **The Caring Closet**

Community Caring &  
Learning Garden

*Grant Award*  
**\$6,068**

\$5,000 from the FORCE Youth  
Advisory Fund;  
\$1,068 from the YWCA Fund  
for Women and Children

## Coal Miners' Park Universal Play Initiative

Back in 2016, the Village of St. Charles established the St. Charles Farmers' Marketplace in Coal Miners' Park. Located on the north-end of the village along M-52, the new Marketplace greatly increased pedestrian traffic in the park. It was quickly noticed that, with the increased use, especially with families with children, that the playground equipment in the park was outdated and lacked activities for those with differing levels of ability.

With much of the playground equipment located "off the beaten path" and containing non-accessible activities for those with mobility challenges, the Village realized a "recreation revitalization" was needed.

Coal Miners' Park Universal Play Initiative was created to replace some of the old, out-of-date non-accessible playground equipment with new pieces that will allow children and families of all abilities to enjoy their play-time experience at Coal Miners' Park.

The new equipment will add to the growing list of amenities at the park. Besides having an access path to the Saginaw Valley Rail Trail, the park also boasts a one mile walking trail, three ballfields, an ice-skating rink, a disc golf course, a sledding hill, two basketball courts, an in-line skating rink, and multiple picnic areas including two pavilions and a large gazebo. In 2018, this park also added a pickleball court.

## Community Caring and Learning Garden

In Kochville Township, at the corner of Mackinaw and Kochville Roads, a unique new community garden was planted last year. The Caring Closet's Community Caring and Learning Garden will produce healthy, fresh fruits and vegetables wrapped with education and partnerships.

The garden program will help to build community, student, and family awareness of the natural world, while simultaneously engaging participants in reasoning, planning, organization and social skills. The focus will be on early childhood and elementary students along with their parents, families, and educators. Teams of early childhood education specialists, agriculture and farming experts, community volunteers, and health management specialists will oversee the garden program.

By providing hands-on learning experiences, the garden will serve as a natural laboratory for introducing participants to various scientific processes through plant-related experiments. It will also establish a connection with nature, generate a healthy lifestyle and nutritional awareness, build relationships, build confidence and sense of ownership, and enhance focus, memory, mood and psychological wellbeing.

Once crops have matured, bi-weekly harvests will be given away to those in-need who visit The Caring Closet – an organization dedicated to the collection and distribution of clothing and household items as well as maintaining a food pantry and serving a hot lunch. Harvested produce will also be sold at the Downtown Saginaw Farmers Market with income being used to support the program.



GRANT HIGHLIGHTS

*art & culture*

# EQUITY INCLUSIVITY ENGAGEMENT

Engagement is described as an active, two-way process in which one party motivates another to get involved and take action – and both parties experience change.

Projects receiving grant funding from your community foundation have each engaged with our village in unique ways.

An innovative year-long community discovery project is helping to celebrate the impact of all people in our village, creating unique insight into the talent of our residents.

Youth are learning about the power of choral music and their own vocal talents.

Embracing the vibrancy of our village, a colorful mural engaged multiple generations in the creation of a public piece of art in Downtown Saginaw.

## **Saginaw Choral Society**

#WeAreSaginaw and  
Saginaw Youth Choir

*Grant Award*  
**\$7,000**

\$6,000 from the FORCE Youth  
Advisory Fund;  
\$1,000 from the YWCA Fund  
for Women and Children

## **The Ezekiel Project**

The Great Mural Project –  
Saginaw: Phase I

*Grant Award*  
**\$2,475**

from the FORCE Youth  
Advisory Fund

## #WeAreSaginaw and Saginaw Youth Choir

From a distance, we shop together, drink coffee together, drive the same roads together, live in our village together, and yet we do not know one another.

The Saginaw Choral Society, in an effort to find new ways to connect and participate with the community, launched a discovery project in 2018 called #WeAreSaginaw as part of the Society's new strategic plan. The project was conceived to celebrate the impact and importance of all people in our village.

At various community-related events, at businesses, organizations and churches, the Saginaw Choral Society invited individuals to participate by asking them to respond to the prompt "I am ...". Individuals wrote their answer on a whiteboard and were photographed. The photos are being shared on a special website ([wearesaginaw.com](http://wearesaginaw.com)) and on social media.

At the end of the Society's concert season in May 2019, a multi-media performance by the Chorus of specially-selected music integrating the photos captured during the #WeAreSaginaw project will unite the community through music.

Another component of the #WeAreSaginaw project was the creation of the Saginaw Youth Choir – in partnership with the Saginaw YMCA. The Youth Choir will be offered to young singers between the ages of 8-15 and consists of three eight-week two hour sessions held at the Saginaw YMCA.

Statistics show that during the formative childhood years, musical education builds confidence, self-esteem, and an outlet for creative self-expression. Statistics also reveal that more people sing in a choir than any other art form. And singing requires no investment in an instrument – only a voice is needed.

## The Great Mural Project

Just south of E. Genesee Ave. in Downtown Saginaw on S. Washington Ave., a new addition to the landscape was added last year. It's hard not to notice the vibrant, abstract mural with the words "Downtown Saginaw" incorporated.

The Ezekiel Project served as the fiscal sponsor for The Great Mural Project – a mural designed by local graphic artist Alayna Partaka (with feedback from Saginaw Arts and Sciences students) and painted by a multitude of volunteer community members of all ages.

Community art helps encourage a sense of pride and excitement among residents. This project will bring attention to the vacant building it is mounted on, beautifying an unused space and potentially spurring its redevelopment. The building that the mural is installed upon does not have a secure future, and the mural was designed with this in mind. It was painted on several exterior marine-grade plywood panels and attached to the building in such a way that it can be moved to another location if necessary.

The mural was painted indoors at the former Libermann's Building on Warren Ave. A call for volunteer painters was broadcast and people of all ages came out to assist in the completion of the mural. Even police officers stopped-by to paint for a few moments.



GRANT HIGHLIGHTS

*history*

# REFLECTION STORIES PURPOSE

We are all storytellers and story listeners. The stories of the past transport us to a different time and help us, in some ways, to frame the future.

Around Old Town Saginaw, history-themed murals have been popping up on buildings telling stories of our past – the latest highlighting our automotive heritage.

Two traveling exhibits connected our village to events around the world with trench art from World War II and art created by children in the war-torn Middle East.

## **Saginaw Valley Historic Preservation Society**

Jackson, Church & Wilcox Mural

*Grant Award*  
**\$1,500**

from the Senior Citizen Enrichment Fund

## **Saginaw Valley State University/Marshall Fredericks Sculpture Museum**

2019 Exhibition Program

*Grant Award*  
**\$13,241.50**

\$12,226.50 from Senior Citizen Enrichment Fund;  
\$1,015 from the YWCA Fund for Women and Children

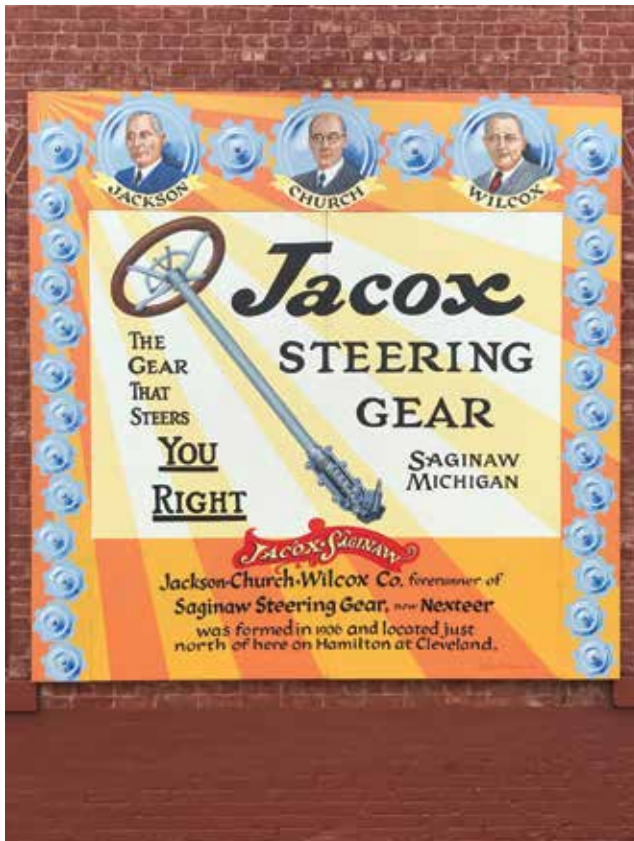


## Jackson, Church, & Wilcox Mural

In the early 1900s, Saginaw was fast becoming an industrial hub, especially in the automotive industry. The Jackson, Church & Wilcox, Co. developed a vastly improved automotive steering gear product that caught the eye of General Motors. Eventually, General Motors acquired the company, transforming it into Saginaw Steering Gear (today's Nexteer Automotive).

To celebrate this early industrial innovation, the Saginaw Valley Historic Preservation received grant funding from SCF to commission a mural. Painted by well-known local artist/muralist, the late Jim Fives, the mural depicts an early advertisement for the Jaycox Steering Gear.

The mural is located on the side of The Stable building in Saginaw's Old Town at the corner of S. Hamilton St. and Cass St. This advertisement joins five other historically-themed murals painted by Jim Fives around Old Town Saginaw that celebrate Saginaw's notable past.



## Exploring History Through Art

Grant funding provided by SCF in 2018 will allow the Marshall M. Fredericks Sculpture Museum at Saginaw Valley State University to bring two traveling art exhibitions to the museum in 2019: *From Swords to Plowshares: World War II Metal Trench Art* and *WAR-TOYS: Israel, West Bank, and Gaza Strip*.

*From Swords to Plowshares: World War II Metal Trench Art* will offer a glimpse into the dazzling array of objects known as "trench art," a term that applies to any item made by soldiers, prisoners of war, or civilians from war material or any other material associated with armed conflict. The works date from the origins of this art form in the trenches of France during the World War I, to post-World War II pieces. Makers of trench art utilized artillery shells, bullets, shrapnel, aircraft parts, currency and other metal scrap and applied materials. The ingenuity and skill ranged from primitive artillery shell vases to elaborate lamps, cigarette lighters and ashtrays, exhibiting high artistic craftsmanship.

In *WAR-TOYS: Israel, West Bank, and Gaza Strip*, photographic works by Brian McCarty interpret children's therapeutic drawings and offer a rare yet fascinating insight into the contemporary experiences of Palestinian and Israeli boys and girls, where rocket attacks, air strikes, gunfire, and explosions are part of daily life.

Examples of artwork featured from the exhibit *From Swords to Plowshares: World War II Metal Trench Art* that will be featured at the Marshall Fredericks Museum at SVSU in 2019.



GRANT HIGHLIGHTS

*stem*

# CONFIDENCE OPPORTUNITY CONNECTIVITY

Our world is becoming more and more complex.

It is more important than ever that our youth are equipped with analytical skills to solve challenging problems. That's where STEM (science, technology, engineering, and math) comes in. By providing access to STEM programming, our youth will gain the knowledge needed to become tomorrow's innovators.

An idea born in Hemlock will allow a new facility to serve as a regional catalyst to inspire STEM exploration for students from surrounding communities.

Endless possibilities and opportunities exist in the world of computer science. Specialized learning opportunities recently helped students and their family members learn how easy, fun, and useful computer programming can be.

## **Hemlock Public School District**

Hemlock Regional STEM Center

*Grant Award*  
**\$14,000**

from the SCF Unrestricted Fund

## **Saginaw Valley State University**

Girls Who Code/We Code

*Grant Award*  
**\$3,235**

from the FORCE Youth Advisory Fund

## Regional STEM Center

In Western Saginaw County, a new regional STEM Center has been constructed. While grant funding from SCF helped with construction of this facility, the ultimate goal is to create a STEM Learning Community leveraging the proven FIRST Robotics program.

The STEM Center, located in Hemlock, will serve as a regional catalyst to inspire science, technology, engineering, and math exploration for K-12 students from several area school districts (Hemlock, Merrill, Swan Valley, and St. Charles).

Students will learn real-world hands-on skills with machining, CAD, 3D Printing, software development (coding), and improving math and engineering skills. They will be able to determine, with experience, if a STEM career is right for them. Students will work with professional engineers, manufacturing professionals, farmers and software engineers.

The students will learn to collaborate with each other. The emphasis of FIRST teams on “gracious professionalism” will allow the students to move beyond the “rivalry” paradigm to more mature and healthy relationships based on mutual respect and helping each other to improve and grow.



## Girls Who Code/We Code

A study by the Girl Scout Research Institute in 2012 found that middle school females start losing interest in STEM due to outdated stereotypes and feelings of insufficiency, subtleties of society, and culture reflecting the stereotype that females are not good at or suited for STEM. To help overcome this, we must encourage young females to ask questions, problem solve and use natural creativity through play, creativity and experimentation to stay interested and engaged in STEM.

With Girls Who Code/We Code, a program developed by and housed at Saginaw Valley State University, is designed to help close the gender gap in fields related to STEM.

Girls Who Code will be held after-school focusing on encouraging Saginaw County middle school females to learn the concepts of programming, working in groups, and designing a Computer Science Impact project that focuses on analyzing a real-world problem and proposing solutions by designing a simple animation or application. We Code are one-day, focused activities for middle school students and parents/guardians/family members interested in coding and will show participants how easy, fun, and useful programming can be.

With some of the activities focused on parents/guardians/family members, the objective is to explore programming that will help with guiding their children with their projects. Parental understanding and support is critical to students' success in STEM.



GRANT HIGHLIGHTS

*education*

# LITERACY COMMUNICATION EXPRESSION

Our children are our future. It is the duty of our village to make sure our children have the best education opportunities available – and two grants from last year are poised to do just that.

An innovative reading academy program, focused on mentoring the whole family, will help children and parents celebrate literacy.

At two area high schools, a local university brings its proven community writing center program directly into the schools – and forms partnerships along the way while also helping students with their writing skills.

## **READ Association of Saginaw County**

Raising Readers Academy

*Grant Award*  
**\$10,000**

\$8,850 from the Lulah C.  
McMullen & Family Endowment  
Fund;  
\$1,150 from the YWCA Fund for  
Women & Children

## **Saginaw Valley State University**

Saginaw Write Now:  
Community and High School  
Writing Centers

*Grant Award*  
**\$8,300**

\$5,000 from the FORCE Youth  
Advisory Fund;  
\$2,300 from the Arthur H.  
Webster Fund;  
\$1,000 from the YWCA Fund for  
Women & Children

## Raising Readers Academy

Back in 2016, the Michigan Legislature passed The Third Grade Reading Law to ensure that students exiting the third grade are reading at or above third grade beginning in the 2019-20 school year. Based on current statistics, nearly 63% (1,201) of not- and partially-proficient third graders in Saginaw County would be retained.

The issue of children having difficulty with reading skills did not happen suddenly and unfortunately will not be resolved quickly. In at-risk districts, students often enter school nearly two years below their grade level. In Michigan, a state where Kindergarten is not mandatory, it is critical for parents to learn how they can positively engage their children in literacy activities in their daily home life.

A \$10,000 grant to the READ Association of Saginaw County for a new, innovative program – Raising Readers Academy – is making strides to help address reading proficiency in Saginaw County, starting with three of the highest at-risk school districts (Bridgeport-Spaulding, Carrollton Public Schools, and Saginaw Public Schools).

The program is a prevention and intervention program designed to enhance reading skill awareness, practice, and advocacy by focusing on parents of at-risk children in grades PreK-3 through participation in activities which promote literacy in their homes.

During the first part of the session, parents will listen to a speaker/instructor, learn about advocacy techniques, and learn how to enact the Read at Home Plan. During this time, children will participate in literacy activities with trained tutors in small groups.

The goal of the program is for families to break down the barrier of negative feeling toward school, perhaps because of past experiences or interactions. By building an environment of trust and success, families will be more likely to attend the sessions, follow-up at home with activities, encourage others to attend, and engage with educational opportunities at their child's school.

## Saginaw Write Now: Community and High School Writing Centers

According to a report by the National Center for Education Statistics, 10% of Saginaw County residents lack basic literacy skills – one of the highest rates in Michigan. While there are a variety of community agencies doing important work to increase residents' reading ability, no one organization is focused specifically on developing writing skills.

In 2015, a grant from Saginaw Community Foundation helped Saginaw Valley State University address this gap by creating a community writing center housed at Saginaw's Butman-Fish Library. Since its creation, over 365 community members have attended the tutorial sessions and workshops

With the success the Saginaw Community Writing Center (SCWC) has experienced, it was discovered that high school students were finding the SCWC difficult to access. Its hours are limited to twice-a-month and transportation is an issue for many.

A two-year pilot program was funded in-part by SCF in 2018 to expand the SCWC to provide once-a-month after-school tutoring inside two area high schools (Arthur Hill and Heritage).



*Scene from READ Association's  
Raising Readers Academy.*



## anything is Possible

FORCE, Saginaw Community Foundation's Youth Advisory Committee, provides a way in which area youth can participate in an array of volunteer opportunities, learn about their community along the way, affect real change while gaining leadership skills, and come to understand that by working hard, anything is possible.

Founded in 1992 as a result of a \$1 million challenge grant from the W.K. Kellogg Foundation, FORCE provides participating area youth a meaningful experience to take part in grantmaking and community service.

Comprised of a diverse group of students in grades 8-12 from across Saginaw County, FORCE gives a voice to youth in our community and gives members a chance to be heard and make decisions that will impact their future.

If you or someone you know is interested in joining FORCE, visit [saginawfoundation.org/site/initiatives/force/](http://saginawfoundation.org/site/initiatives/force/) for more information.



# where are they now?

Hundreds of students have participated in FORCE since it was established back in 1992. We caught up with two FORCE alumni to see what they are doing now.



## Trevis Harrold

**Heritage High School • Eastern Michigan University** – Undergraduate Degree: Political Science and Economics, 2015 • **University of Michigan** – Graduate Degree: Public Policy, 2017 • **Years involved with FORCE:** 2 years

**What are you doing now?** I work for the U.S. Department of State as a Foreign Service Officer (FSO). FSOs formulate and implement the foreign policy of the United States. FSOs spend most of their careers overseas as members of U.S. embassies, consulates, and other diplomatic missions across the world.

**What lessons did you learn during your involvement with FORCE that you are applying to your life today?** I learned a lot about team building from my involvement with FORCE. I learned how to build consensus for the greater good of the community.

Every meeting I had the chance to meet different students from different schools from the Saginaw community. It made me realize at a young age that Saginaw is much bigger than my high school community.

**Describe what it means to you to be a philanthropist.** A philanthropist can realize that moments and levels of impact are bigger than self-interest. A philanthropist knows how to make a positive impact through various different avenues. A philanthropist has the willingness to make sacrifices for the betterment of humanity.



## Breannah Alexander

**Arthur Hill High School/SASA • Grand Valley State University** – Undergraduate Degree: Criminal Justice and Public Administration  
**Years involved with FORCE:** 4 years

**What are you doing now?** I currently work for Michigan Disability Rights Coalition managing the Leadership Engagement and Advocacy Development Project funded by the Developmental Disabilities Council.

**What did you love most about volunteering with FORCE and Saginaw Community Foundation?** I loved that my opinion was valued by other young people and adults. There are so few spaces where young people are given the opportunity to make decisions and have those decisions

lead to the distribution of real funds. Oftentimes young people are restricted to participating in mock processes, and those have value, but I think the enriching part about FORCE and the community foundation's view of young people, is that young people are perfectly capable of making decisions with consequences and that trust empowers them to think deeply and boldly about how they use real power.

# our Volunteers

To our hundreds of volunteers, you are an inspiration. Without your commitment of time and talent, we would not be able to do all of the great things we do in our community. Your willingness to serve on committees or to review scholarship applications is greatly appreciated. And for that we say "thank you."

Stacey Abbs	Darrell Cho	Gary Gudmundsen	Bonnie Lewis	Srijita Pramanik	Gladys Strobel
David Abbs	Beth Church	Dave Hall	Mikayla Lietzke	Bonnie Prestin	David Stuber
Alina Alam	Nancy Cisneros	Ronda Henderson	Judith Lincoln	Stacy Priem	Debra Suffety
Daphne	Morrall Claramunt	Steven Hensley	Melissa Lindsey	Jack Provenzano	Megan Sulkanen
Allen-Bardell	Anthony Clark	Jessica Hernandez	Roger Little	Larry Prueter	Nichole
Deb Anderson	Margaret Clark	James Hewitt	Leia Lopez-Gambo	Christopher Pryor	Swackhamer
Gretchen Anderson	Tara Cohee	Ana Hidalgo	Kathy Luplow	Carrington Pryor	Julie Taktor
Abdurrahman Arif	Michael Cohen	Kimberly Hill	Trish Luplow	Angie Purvis	Glynis Talley
Annaleese	Michael Colby	Zyk Hlavacek	Amy Luplow	Jack Raines	Jack Tany
Armstrong	Terry Collier	Maila Hoffman	Tom Luplow	Hoisea Ransom	Cathy Tatrow
Lori Aultman	Hurley Colman, Jr.	Kate Hofmann	Timothy MacKay	Jack Rehmann	Dana Tell
Thelma Bailey	Jena Colon	Wayne Hofmann	Barb Madigan	Janet Reif	Brandon Terry
Trisha E. Baker	Mike Colucci	Jessica Holmes	A. Michael Manzoni	Holli Reinelt	Sydney Terry
Mary Jane	Marsha Cooley	Smallwood	Kelsi Marcoux	Lindsay Richardson	Jordan Thieme
Balcueva	Carol Cottrell	Holoman, Jr.	Nicole Marinelli	Barbara Roberts	Mamie Thorns
Ernie Balcueva	Joanie Covert	Barbara Honsinger	Anne Marks-	Angelique Rooney	Lawrence Toft, Jr.
Ernest F. Balcueva	Ellen Crane	Cecelia Hopkins	Gaertner	Minerva Rosales	Nancy Topham
Denise Baldwin	Janet Crane	Laura Horuath	Iris Marteja	Peter Rose-Barry	Tom Tromble
Keoshia Banks	Susan Crane	Sandy Iles	Catherine Martinez	Felicia Rose-Barry	Megan Tuttle
Angela Barris	Harry Cripps	William Inman	Keith Mayer	Barbara Russell	Alyssa Vasquez
Mary Sue Barry	Eric Cullier	Miikal Inman	Karly Mayer	Rick Russell	BreAnna Villaire
Tom Basil	Cheryl Currie	Marissa Irish	Maria McCarville	Susan Sadenwater	Carsyn Wachowicz
Kelly Baskind	Sandy Dabrowski	Angie Irish	Jodi McFarland	Board of St. Charles	Steve Walker
Ann Marie Batkoski	Bill Dalton	Joseph Johnson	Michelle McGregor	Haunted House	Christopher Walsh
Anna	Culli Damuth	Kayla Johnson	Channing McKay	Association	Bettina Walsh
Baukus-Konieczka	Makenna Dawson	Jennifer Johnson	Jaime McKenna	Mary Salamon	Bethany Warezak
Aliyah Beal	Danielle DeJaegher	Nancy Joseph	Samantha	Debra Salow	Richard Watson
Khloe Beal	Sue DeKett	Amanda Jovanovich	McKenzie	Linda Sanborn	Richard Watson, Jr.
Christina Bell	Maya Demand	Kelly Juday	Karli McNeil	Jared Sanderson	Rhonda Webb
Lorisa Bellinger	Alyssa DePlonty	Rob Kain	Karen McNish	Judy Sarmiento	Hannah Webb
Jaye Blakely	Rianna Di Jesus	Catherine	Rowan Meddaugh	Harold Saunders	Ally
Diane Bofferding	Louis Diechman	Kalahar-Walker	Guy Merriam	Autumn Scherzer	Wehner-Bourdown
Heidi Bolger	Jim Doane	Ellen Keeler	Chelsea Michael	Zachary Schmid	Carolyn Weiss
Jeff Bookmyer	Christie Douglas	Sarah	Kelly Mileski	Cindy Schneider	Joanmarie Weiss
Adrienne Bowman	Jill Dralle	Keenan-Lechel	Emma Miller	Amy Schnople	Lisa Weldy
Elizabeth Boyd	Ron Dressler	Brian	Brian Miller	Louie Schultz	Keith Wenzel
Sheilda Braddock	Dawn Earnesty	Keenan-Lechel	Tom Miller, Jr.	Michael Schultz	Emma Wilson
Ruth Braun	Mary Lou Ederer	Jennifer Kehres	Jim Milroy	Aricka Schweitzer	Margo Winieckie
Kelly Breasbois	Richard Ederer	Jay Kerns	Amy Minkin	Tina Seager	Gretchen
Lawrence	Rose Ederer	Hilda Kidder	James Mitchell	Darci Seamon	Witherspoon
Brethauer	Caitlin Ellico	Erin Kilts	Dillon	Patricia Shaheen	Lula Woodard
Mary Bridgewater	Maureen Ervay	Yvonne Kinney	Moorehead-English	Kelly Shay	Beverly Yanca
Dietrich Bronner	Mary Lou Feldotte	Emily Kinnicutt	Derrick	Laurie Shell	Laura Yockey
Heather Brown	Elian Fichtner	Marsha Kleber	Moorehead-English	John Shelton	Jerry Young
David Brown	Mark Flegenheimer	Ruth Ann Knapp	Lisa Mora-Jackson	Jake Shinners	Nabil Zaman
Melisa Brown	Michele Fleming	Brenda Knaus	Victoria Mullins	Beth	Shalynn Zauner
Jacob Browning	Amy Ford	Sarah Knochel	Stephanie Muringer	Signorini-Hagen	Sarah Ziegelmann
Kayla Brzak	James Gaertner	Rosemary Kohut	Kathryn Myers	Linda Sims	
Cheri Burk	Delores Gale	John Kosanovich	Kristy Nelson	Donna Slick	
Sherry Burkhardt	Fred Gardner	Steve Kowalewski	Susan Nielsen	Thomas Slivinski	
Robert Burrell	Alannah Garrett	Alicia Kowalewski	Gene Nuckolls	Sherrill Smith	
Carrie Butler	Lynne George	Jessica Kraniak	Karin O'Brien	Ella Smith	
Karen Butler	Mary Goedert	Derek Kreszowski	Lou Ognisanti	Bridget Smith	
Madeline Campbell	Victor Gomez	Barbara Krzyzaniak	Patricia Ognisanti	Lily Somers	
Deanne Campbell	Maricela Gonzalez	Betsy Kubczak	Anne Opperman	Herbert Spence, III	
Brianna Campos	Monica Goschke	William Kubczak	Larry Packard	Carol Stahl	
Daniel Cannon	Renee Graham	Connie Kubczak	Hannah Pan	Margaret Steele	
Terianne Carey	Lillie Grays	Sue Lautzenhiser	Kim Patterson	Melissa Steiner	
Haley Case	Andrea Green	Kimberly Leach	Kim Pavlik	John Stemple	
Becky Casemyers	Suzanne Greenberg	Mai Lee	Kayla Petz	Angela Stevens	
Heidi Chasnis	Todd Gregory	Victoria Leonard	Richard Petzko	Kathy Stewart	
Mary Chavalia	Heather Grigg	Art Lewis	Wendy Pogoda	Samantha Strahl	





A great way to honor someone special is to give an honor or memory tribute gift. These gifts become lasting, living legacy's and help Saginaw Community Foundation make grants to a wide variety of charitable, educational, health and cultural programs

### Honor Donations

A thoughtful way to honor and commemorate an important moment by recognizing a birth, graduation, anniversary, special achievement or simply "just because." Below are contributions made during 2018 in honor of:

Michael D. Bierlein	Vera M. Hanisko	Sally M. Peterson
Heidi A. Bolger	Jennifer Jaffe	Marcene Surian
Amy Fowle	Steven Kyle Kowalewski	Spencer S. Taylor
Mary Ellen Gase	Loubertha T. Little	
Paul J. Guldenzoph	Aaron & Emily Louchart	

### Tribute Donations

A meaningful way to honor a friend or relative or to express your condolences. When you give to Saginaw Community Foundation, you honor a special life by helping us meet the ever changing needs of Saginaw County. For good. For ever. Below are contributions made during 2018 in memory of:

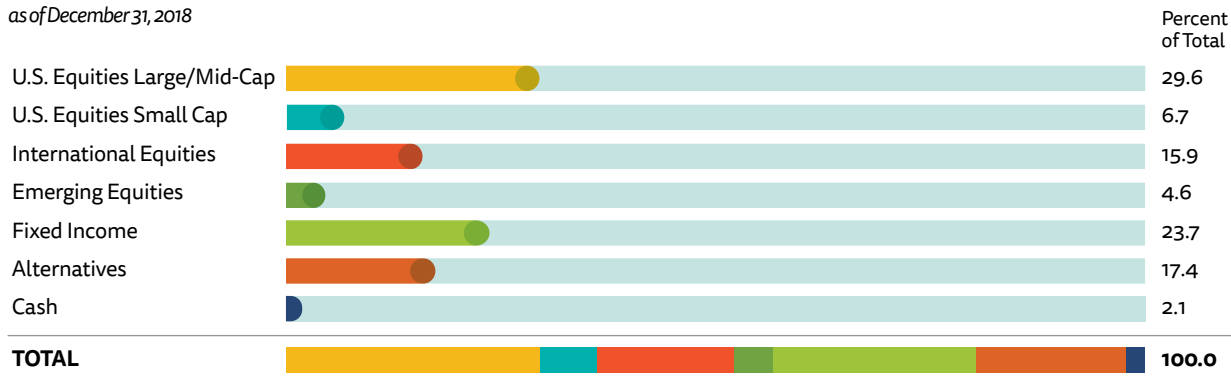
Lauralee W. Adams	Jerry Hamling	Philip Sturtz
Sharon Alger	Ruth M. Hanson	Curtis "Curt" R. Thayer
Norman Bergdolt	William A. Hendrick, Sr.	Russell Titus
Catherine J. Bidwell	Carrie Hines	Marjorie Toth
Alice Bitterman	Janina "Janet" Kowalewski	Robert Urbain
Richard Browne	Steven Kyle Kowalewski	Jerry Valeck
Earnest Burnell	Walter A. Kushion	Linda M. Veresh
Winston Butler	William A. "Bill" Lacker	Yvonne "Dolly" Votruba
Shirley Casler	Patricia C. Markey	State Supt. Brian Whiston
Nina C. Cawley	Dr. William G. Mason	Bishop Herbert J. Williams
Helen Ciaramitaro	Joana D. McKeoun	Gerald "Jerry" Winters, Sr.
Gladys Colwye	Joanne M. McLeod	
Naomi T. Cook	Arthur & Kathryn Menapace	
Anton F. "Tony" Deisler, Sr.	Debbi A. Mendoza-Kelly	
Jacolyn A. "Jackie" Deisler	L. J. Morgrette	
Shirley M. Dennis	Larry Norris	
Pasquale "Pat" DiSarno	Hollis "Bud" Pace II	
John F. Egloff	Ted Pawlik	
Irene Evon	John Pitrone	
Jack Foote	Kenneth Reimus	
Herbet Fowle	David H. Roche	
Thomas L. Frank	George and Kim Ruhana	
Frieda M. Frontiera	Arthur Sawyer	
James Frontiera	Howard Sharper, Jr.	
Donna Fryer	Jeannine Simon	
Kenyon Paul Gee	Lonza Lee "Lonny" Simpson	
Charles A. "Charlie" Gilfeather	Ronald T. Snow, Sr.	
Cynthia "Cindy" Guzy	Richard Stumph	

# financial Review

We believe it is important that an organization be fiscally responsible and that the funds entrusted to its care be used as intended. The Saginaw Community Foundation takes our stewardship role very seriously. On these pages, we have included information regarding the investment of our assets, our condensed financial statement and a breakdown of our grants and administrative expenses. If you would like to review a copy of the foundation's audit, please give us a call.

## Asset Allocation

as of December 31, 2018



## Target Asset Allocation and Current Managers

as of December 31, 2018

### Large/Mid Cap U.S. Equities 27.5%

Clearbridge Large Cap Growth  
DFA US Core Equity  
FCI Large Cap Value  
Jennison Large Cap Growth

### Small Cap U.S. Equities 7.5%

RBC Global Small Cap Growth  
Silvercrest Small Cap Value

### International - Developed Equities 17.5%

DFA International Core Equity  
DFA International Small Company  
Harding Loevner International

### Emerging Equities 5%

DFA Emerging Markets Core Equity

### Fixed Income 22.5%

FCI Aggregate Fixed Income  
Hotchkis & Wiley High Yield  
PIMCO Real Return  
Vanguard Total Bond Index

### Alternatives 20%

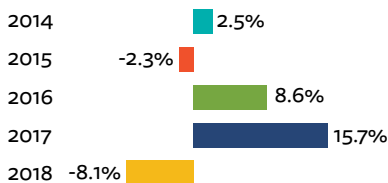
Absolute Return 7.5%  
Ironwood International, Ltd.  
John Hancock GARS

Natural Resources 5%  
Credit Suisse Commodities Return Strategy  
Tortoise MLP & Pipeline Fund

Hedged Equity 7.5%  
Alkeon Growth Offshore Fund  
Eagle Aggressive Growth II

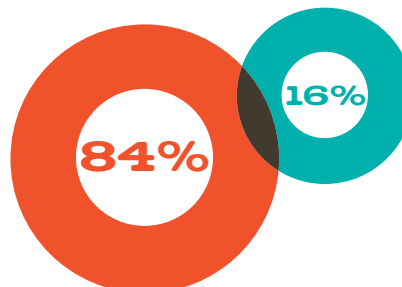
## Net Annual Returns

as of December 31, 2018



3-year average return..... 5.4%  
5-year average return..... 3.3%  
Average return since 1991..... 7.4%

## Analysis of Expenses



**16%**  
Support Services as a percentage of Total Expenses

**84%**  
Program Services and Grants as a percentage of Total Expenses

## Statement of Financial Position

	Years ending December 31	
	2018	2017
<b>Assets</b>		
<b>Current Assets</b>		
Cash	\$2,945,441	\$1,877,953
Accounts receivable	0	0
Current portion, promises to give	2,445	37,685
Note receivable, current portion	13,057	11,957
Prepaid expenses	3,927	0
<b>Total Current Assets</b>	<b>\$2,964,870</b>	<b>\$1,927,595</b>
Long-term note receivable	\$1,077,046	\$690,996
Long-term investments	58,724,694	64,984,323
Equipment, net of accumulated depreciation	25,784	50,772
Charitable remainder trusts	270,265	330,593
Other assets	44,830	57,813
<b>Total Assets</b>	<b>\$63,107,489</b>	<b>\$68,042,092</b>
<b>Liabilities and Fund Balance</b>		
<b>Current Liabilities</b>		
Accounts payable and accrued expenses	\$74,234	\$61,734
Grants payable	17,172	223,487
Annuity payment liability, current portion	0	1,458
Deferred revenue	5,000	0
<b>Total Current Liabilities</b>	<b>\$96,406</b>	<b>\$286,679</b>
Grants payable, less current portion	3,718	7,070
Donor designations for specific organizations	2,770,546	2,931,323
<b>Total Liabilities</b>	<b>\$2,870,670</b>	<b>\$3,224,981</b>
<b>Net Assets</b>		
Unrestricted	\$59,964,109	\$64,448,833
Temporarily restricted	272,710	368,278
<b>Total Net Assets</b>	<b>\$60,236,819</b>	<b>\$64,817,111</b>
<b>Total Liabilities And Net Assets</b>	<b>\$63,107,489</b>	<b>\$68,042,092</b>

## Statement of Activities

<b>Revenues</b>		
Investment income	(5,004,448)	8,630,001
Gifts and bequests	5,238,229	2,766,831
Less: Agency gifts	(115,711)	(121,577)
<b>Total Revenue</b>	<b>\$118,070</b>	<b>\$11,275,255</b>
<b>Expenses</b>		
Program services		
Program grants	\$3,959,633	\$3,077,651
Less: Agency grants	0	(126,332)
Program initiatives	0	797,965
Program grants and administration	0	72,339
Support services		
Program management and development	0	317,353
Management and general	705,435	553,756
Fundraising	33,294	12,638
<b>Total Expenses</b>	<b>\$4,698,362</b>	<b>\$4,705,370</b>
Change in net assets	(4,580,292)	\$6,569,885
Net assets, beginning of year	\$64,817,111	\$58,247,226
<b>Net Assets, End Of Year</b>	<b>\$60,236,819</b>	<b>\$64,817,111</b>

Hundreds of individuals, families, companies and organizations have created a charitable legacy by establishing a fund at the Saginaw Community Foundation. We are honored to serve as the steward of these gifts. If you are interested in establishing your own fund, give us a call at (989) 755-0545. We can help you meet your philanthropic goals.

## New Funds

### Community Initiative/Special Project

Counter Culture  
Ascension Renaissance  
Carolyn Scharrer Ability Center  
City of Saginaw & Saginaw County Healthy Living Project  
Downtown Saginaw Book  
Draymond Green Feeds Saginaw  
Girl Effect/TEGA Initiative  
The Michigan Banner Outreach Fundraiser Activities  
SCF Investing for Community Impact Fund  
Saginaw Township Community Schools Theatre Booster Club  
Police Reserves Vehicle Aquisition

### Designated

James R & Anita Horne Jenkins SCF Board Directed Community Impact Fund  
James R. & Anita Horne Jenkins Saginaw Community Foundation CEO Directed Community Outreach  
Thomas B. Mudd Friends of Hoyt Park  
Elissa Rose

### Donor Advised

Elynor Kazuk Fund  
McQuillan Philanthropy  
Victorious Life Community Fund  
Wolohan Family Foundation

### Field of Interest

Healthy Community

### Scholarship

Daniel J. Alcock Scholarship  
Alpha Sigma Chapter, Alpha Delta Kappa, Inc. Scholarship Fund  
Rev. Dr. Roosevelt & Dr. Nurame Austin Scholarship  
Bridgeport Days Scholarship  
Cody & Zach Skilled Trades Scholarship  
James R. & Anita Horne Jenkins Scholarship  
David R. Jackson Memorial Scholarship  
Menapace Family Scholarship  
Mary Merchant Scholarship  
Shields Men's Club  
Thomas Orthodontic Scholarship  
Matthew Jay Thon Memorial Scholarship

## Community Initiative/ Special Project Funds

A Place for Grace Activity Fund  
A String Instrumental Program

Administrative Project Fund  
Alignment Saginaw  
All Music is Power  
Ambassadors for Opportunity  
Andersen Water Park Re-purposing Fund  
Arson Watch Fund  
Art & About  
Backpack Buddies  
Backpack Buddies - Saginaw Public Schools  
Bierlein Diabetes Special Event Fund  
Bridge the Gap  
Bridgeport Township Challenger Athletic Complex  
Buena Vista Parks and Recreation Fund  
Carrollton Education Foundation Special Project Fund  
Cemetery Capital Improvement Fund  
Children's Sports & Health Fitness  
Christian Youth Fellowship Association of Saginaw  
Community Advancement Network  
Counter Culture  
Dow Community Gives  
Dow Serving Up Opportunities For Our Future  
Freeland Soccer Club  
Friends of City Hall  
Friends of Garber Courts  
Get Outside for a Healthy Inside  
Global Preservation Foundation Fund  
Grants For Excellence Fund  
Great Lakes Bay Miracle League  
Great Lakes Bay Region Buddy Walk  
Greenwood Elite  
Heroes For Kids Special Event Fund  
Huntington Event Park  
Indo-Pak Special Event Fund  
Michael Jeffers Memorial Fountain and Park  
Jump Fresh Youth Academy  
Junior Leadership Saginaw Scholarship Fund  
Kids Rule Now  
Law Day Special Event Fund  
Lawn Chair Film Festival  
Making Words Count  
Judge Gary R. McDonald Special Event Fund  
Michigan DNR Summer Youth Employment Program  
Michigan Health Endowment - Obesity  
Michigan State Housing Development Authority Fund  
Mid-Michigan Wellness Foundation  
Miles for Memories  
Miss Saginaw County Scholarship Pageant  
Morley Building Fund  
Nexteer First STEM Fund  
NSTLL (Sam Merrill Memorial Pavilion)  
Play It Forward  
Power of Dad  
Project Safe Neighborhood  
Project Unity Fund  
PX2  
Read It Up Program Fund  
Riverfront Saginaw  
SASA SPAC  
SASA Technology Fund  
Saginaw Baseball Club  
Saginaw Celebrates Summer  
Saginaw Community Foundation Impact Challenge Fund  
Saginaw County Animal Care and Control  
Saginaw County African American Leadership Training Institute  
Saginaw County Spelling Bee  
Saginaw County's Promise Fund  
Saginaw Firefighter's Fund  
Saginaw Harvest Table  
Saginaw Intermediate School District College Advisor Fund  
Saginaw Leadership Cares  
Saginaw Promise Zone Fund  
Saginaw Riverfront Development Fund  
Saginaw Sesquicentennial Fund  
Saginaw Township Soccer Complex Expansion Fund  
Saginaw Township Soccer Complex 2012 Goal Fund  
Saginaw Valley Police Canine Association  
Saginaw's Got Soul  
St. Charles Community Center Bronze Mascot Project  
Sports Hall of Fame Renovation  
Stand Up Award  
The Stephens School of Performing Arts  
Stu's Crew Special  
Tool Totes  
Tri-City Links  
True North Sand & Snow Day Vacations  
Youth First  
Youth First - Martin G. Atkins Elementary  
Youth First - Carrollton Elementary  
Youth First - Henry Doerr Elementary  
Youth First - Jesse Loomis Elementary  
Youth First - Merrill Elementary  
  
**Designated Funds**  
Lucy R. Allen Cornerstone Fund  
Arthur Hill High School Alumni Fund  
ARTreach Fund - City  
ARTreach Fund  
Big Brothers/Big Sisters of Saginaw Bay Area

Endowment Fund  
 Bishop Ken Leadership Saginaw Scholarship  
 Bliss Park Fund  
 Boys & Girls Club Endowment Fund  
 Ruth and Ted Braun Fellowship Program Fund  
 Bridge Center for Racial Harmony Endowment Fund  
 Buena Vista Charter Township Playscape Fund  
 Carrollton Education Foundation Fund  
 Celebration Square Carousel Endowment Fund  
 Kittur Rani Channamma School Cultural Exchange Program Fund  
 Chesaning Riverboat Playscape Endowment Fund  
 Child Abuse & Neglect Council Endowment Fund  
 Children's Zoo at Celebration Square Endowment Fund  
 City Rescue Mission Endowment Fund  
 Mick Cottrell & Carol B. Cottrell Fireworks Fund  
 Deindorfer Woods Fund  
 Edward and Erna Ederer Memorial Animal Care Center Fund  
 Edward and Erna Ederer Memorial Covenant Healthcare Fund  
 Edward and Erna Ederer Memorial Delta College Public Television Fund  
 Edward and Erna Ederer Memorial Historical Society of Saginaw County Fund  
 Edward and Erna Ederer Memorial Saginaw Children's Zoo Fund  
 Edward and Erna Ederer Memorial Thomas Township Library Fund  
 Edward and Erna Ederer Memorial Thomas Township Public Safety Fund  
 Field Neurosciences Institute Endowment Fund  
 Patrick Flynn Memorial Fund  
 Louise Forbes Memorial Fund  
 Jane Fowle Endowment Fund  
 Herbert E. Fowle Memorial Scholarship  
 Frankenmuth Community Foundation Fund  
 Frankenmuth Historical Museum Endowment Fund  
 Donald and Carolyn Fraser Memorial Fund  
 Alma Gilmore Charitable Remainder Unitrust  
 Girl Scouts Heart of Michigan Fund  
 Grams Memorial Library Fund  
 Great Lakes Bay Miracle League Endowment Fund  
 Great Lakes Bay Regional Trail  
 Greater Merrill Area Community Fund  
 Green Point Nature Center Endowment Fund  
 Handley School Foundation Fund  
 Handley School Foundation Special Project Fund  
 Hartley Outdoor Education Foundation Fund  
 Hartley Foundation Special Education Fund  
 Harvest Home Endowment Fund  
 Robert M. and Emily S. Heavenrich Fund  
 Hidden Harvest Endowment Fund  
 Historical Society of Saginaw County Endowment Fund  
 Elmer L. Huebner Fund  
 Junior Achievement Endowment Fund  
 Junior League of the Great Lakes Bay Region Endowment Fund  
 Kochville Township Parks and Recreation Maintenance Fund

Chum and Phyllis Kuehn Fund  
 Judith A. Marx Endowment Fund  
 Marketing/Technology Fund  
 Henry G. Marsh-Saginaw Habitat for Humanity Fund  
 Dr. William G. Mason Endowment Fund  
 McNally Hospitality House Endowment Fund  
 Michigan Lutheran Seminary  
 Michigan's Own Endowment Fund  
 Mid-Michigan Children's Museum Endowment Fund  
 Mridha Foundation Teacher of the Year Endowment Fund  
 Mudd Family Historic Preservation Fund  
 Dr. Richard D. Mudd YMCA Youth Fund  
 Rose M. Mudd Farmer's Market Fund  
 Operation Sparkle Fund  
 Opportunities Industrialization Center of Metropolitan Saginaw, Inc. Endowment Fund  
 Optimist Club of Saginaw Youth Orchestra Fund  
 Partners-in-Philanthropy Fund  
 Partnership for the Saginaw Bay Watershed Endowment Fund  
 Pit & Balcony Endowment Fund  
 Project Heartstart Fund  
 Promise Neighborhoods  
 Public Libraries of Saginaw – Butman Fish Endowment Fund  
 Public Libraries of Saginaw – Claytor Endowment Fund  
 Public Libraries of Saginaw – Children's Services Endowment Fund  
 Public Libraries of Saginaw – Eddy Endowment Fund  
 Public Libraries of Saginaw Foundation Fund  
 Public Libraries of Saginaw – Hoyt Endowment Fund  
 Public Libraries of Saginaw – Wickes Endowment Fund  
 Public Libraries of Saginaw – Zael Endowment Fund  
 READ Association Endowment Fund  
 Sylvia and Kenneth "John" Reimus Endowment  
 Disaster Relief Fund  
 George W. Romney Fund  
 Saginaw Area Foundation for Eyecare  
 Saginaw Art Museum Endowment Fund  
 Saginaw Arts & Sciences Academy Foundation  
 Saginaw Arts & Sciences Academy Athletic Booster Club  
 Saginaw Arts & Sciences Academy Special Event Fund  
 Saginaw Basin Land Conservancy  
 Saginaw Bay Symphony 22<sup>nd</sup> Century Endowment Fund  
 Saginaw Choral Society Endowment Fund  
 Saginaw Community Foundation 25<sup>th</sup> Gift Fund  
 Saginaw Community Mental Health Endowment Fund I  
 Saginaw Community Mental Health Endowment Fund II  
 Saginaw Conservation District Fund  
 Saginaw County Convention and Visitor Bureau Reserve Fund

Saginaw County Chamber Foundation Endowment Fund  
 Saginaw County Youth Protection Council Homeless Prevention  
 Saginaw County Youth Protection Council Endowment Fund  
 Saginaw County Veterans Memorial Plaza Endowment Fund  
 Saginaw Future Fund  
 Saginaw Hall of Fame Bean Bunny Fund  
 Saginaw Scouting Outreach Program Fund  
 Saginaw Township Community Schools Foundation Fund  
 Saginaw Township Community Schools Orchestra Program Endowment Fund  
 Saginaw Township Playscape Endowment Fund  
 Saginaw Transit Authority Regional Services  
 Saginaw Valley Concert Association Endowment Fund  
 Saginaw Valley Regional 4C Endowment Fund  
 Saginaw Valley State University Musical Artists in Residence Endowment Fund  
 St. Charles Area Museum Endowment  
 St. Charles Community Schools Foundation Fund  
 St. Charles Fund  
 St. John's Episcopal Church Fund  
 Scholarship On-Line Technology Fund  
 Louis R. Schwartz and Helen E. Schwartz  
 William E. Shephard Band Scholarship Fund  
 Maynard L. Smith, Jr. Scholarship Endowment Trust  
 Glada G. Strobel Memorial Fund  
 Gerald J. & Joan B. Talbot Fund  
 Curtis R. & Donna R. Thayer Fund  
 Thomas Township Library Endowment Fund  
 Thomas Township Parks Fund  
 Tittabawassee Downtown Development Authority Health/Fitness  
 Tri-County Council NLUS Youth Program Fund  
 Underground Railroad Endowment Fund  
 United Way of Saginaw County Kresge Endowment Fund  
 United Way of Saginaw County Perpetual Donor Fund  
 United Way of Saginaw County Reserve Fund  
 V.K. Volk Fund  
 Westlund Child Guidance Clinic Fund  
 Lendell J. Williams Memorial Scholarship Fund  
 Lynn & Bebe Wolgast  
 Junzo Yamamoto Japanese Tea House Fund

## Donor Advised Funds

Lou & Tom Beffrey Fund  
 Bierlein Family Diabetes Fund  
 John & Michele Bueker Music Fund  
 Circle Michigan Foundation  
 Citizen's Bank Corporate Advised Fund  
 Citizens Bank Neighborhood Revitalization Fund  
 Nancy Claramunt Dance Foundation Fund  
 Dr. Louis & Karen Constan Fund  
 The Dow Chemical Company Foundation Donor Advised Fund

Dow Corning Foundation Donor Advised Endowment Fund  
 Leo C. Eckenswiller Trust Fund  
 Elizabeth Eddy Fund  
 The Edward & Erna Ederer Family Foundation Fund  
 Fisher Family Foundation  
 Flegenheimer Family Foundation Fund  
 Fordney Club of Saginaw County Donor Advised Fund  
 Hemlock Semiconductor Hemlock Site Fund  
 Heroes for Kids Endowment Fund  
 Dr. Roy A. Hills Endowment Fund  
 Huntley Family Endowment Fund  
 Indian and Pakistani Friendship Fund  
 Aarol W. & Elaine M. Irish Family Foundation Fund  
 Dr. Roger N. Kahn Fund  
 K.P. Karunakaran Family Foundation Fund  
 Vincent A. Knoll Durable Device Fund  
 Mr. & Mrs. James R. Krohn Fund  
 Legacy Civic Fund  
 Glenn Mayer Memorial Fund  
 Virginia & Don Nash Fund  
 National Association of Insurance & Financial Advisors Saginaw Fund  
 Nexteer Community Improvement Fund  
 Nexteer Education Fund  
 Nexteer Steering the Future Fund  
 Maria Elizabeth Paquette Eternal Memorial Fund  
 Betty Sabeti Foundation for Global Humanitarian Advancement of Women & Children  
 Saginaw Bay Underwriters Fund  
 Saginaw County Legal Endowment  
 Saginaw Public Schools Endowment Fund  
 Saginaw River of Life Fund  
 Saginaw Sees the Light  
 Schropp Family Fund  
 SCLA Scholarship Fund  
 Robert E. Stark & Martin H. Stark Foundation Fund  
 Stevens Family Foundation Fund  
 Stu's Crew  
 Sucharitha Swamy and Minu P. Bhagat Charitable Fund  
 Odail & Mamie Thorns Donor Advised Fund  
 Akbar Waqf Foundation Fund  
 Carl H., Jr. and Sandra Werth Fund  
 Harvey Randall Wickes Donor Advised Fund II  
 David G. & Lois B. Wilkins Donor Advised Fund  
 Wolf Family Foundation Fund  
 Wolohan Enterprises, Inc. Fund

## Field of Interest Funds

At-Risk Youth Fund  
 Chesaning Area Community Foundation  
 Chesaning Fund  
 Mick Cottrell & Carol B. Cottrell Fund  
 Anna Dorr Cresswell Memorial Fund  
 Damuth Family Fund  
 Doctor's Health Fund  
 Mary Elizabeth Dudek Swimming Fund  
 Education Fund

Energy Initiative Fund  
 David & Jacqueline Hall Fund  
 HAP Healthy Initiatives Fund  
 Healthy Community Partners  
 Healthy Youth & Healthy Seniors Endowment Fund  
 Mildred Culbert Kelly & Fred W. Kelly Fund  
 Kennett Women's Fund  
 K. Lucille & James Martineau Family Fund  
 Lulah C. McMullen & Family Endowment Fund  
 Mental Health Fund  
 Neighborhood Revitalization Fund  
 Next Generation CARES Fund  
 Saginaw Community Arts Fund  
 Saginaw County Child Development Fund  
 Saginaw County Parks Fund  
 Saginaw County's Promise Endowment Fund  
 Saginaw County Youth FORCE Fund  
 Saginaw Diabetes Fund  
 Saginaw Valley Dancers  
 Senior Citizen Enrichment Fund  
 Tiderington Family Fund  
 Arthur H. Webster Fund  
 Carl Werth, Sr. & Ruth Werth Memorial Fund  
 Bill Wolcott Memorial Fund  
 YWCA Fund for Women & Girls

## Scholarship Funds

21 Club Scholarship Fund  
 The Rev. William D. Aldridge, Sr. Scholarship Fund  
 American Business Women's Association, Saginaw Charter Chapter Scholarship Fund  
 Frank N. Andersen Memorial Scholarship Fund  
 Nels Andersen Scholarship Fund  
 Nick Andros Music Scholarship Fund  
 Arthur Hill High School Scholarship Fund  
 Balcueva Family Memorial Scholarship Fund  
 Gary K. Barker Science Scholarship Fund  
 Bernice Barlow NAACP Scholarship Fund  
 Bethel A.M.E Church Scholarship Fund  
 Gary R. Bierlein Memorial Scholarship Fund  
 Pama Brantley-Phillips Scholarship Fund  
 Bridge to College Scholarship Fund  
 Charles F. & Edith E. Brunkow Scholarship Fund  
 Louise Eaton Buck Art Scholarship Fund  
 Thomas Burkhardt Scholarship Fund  
 Can-Amara Games  
 Carrollton Education Foundation Scholarship Endowment Fund  
 Case Family Scholarship Fund  
 Casting Your Future UAW Local 668 Scholarship Fund  
 Circle Michigan Foundation Scholarship  
 Nancy Claramunt Pass-through Scholarship  
 Cohen Leadership Scholarship  
 Kara Susan Kaltenbach Conlan Scholarship  
 Robert R. & Naomi T. Cook Scholarship Fund  
 Donald Stuart Corsaut Memorial Scholarship Fund  
 Larry A. Coulouris Memorial Scholarship  
 Clifford E. Davis Youth Leadership Fund

Carol A. Doman-Wilder Scholarship Fund  
 Alma Gilmore Doud Memorial Scholarship  
 Douglas Family Scholarship Fund  
 Jordan M. Draper Memorial Scholarship Fund  
 Emily Anne Dressler Memorial Scholarship Fund  
 Scott Durand Memorial Foundation Fund  
 Christopher T. Erskine Memorial Scholarship Fund  
 Mary J. Ewing Scholarship Fund  
 First Ward: Mark Neumeier Success Scholarship  
 E.C. Fisher Scholarship Fund  
 Max Fisher Scholarship Fund  
 Flegenheimer Family Scholarship  
 Jack Foote Memorial Scholarship  
 Freeland SportsZone Trades Scholarship  
 William & Cordula Freese Scholarship Fund  
 James & Anne Marks-Gaertner Fine Arts Scholarship Fund  
 Bobbi J. Galarno Memorial Scholarship Fund  
 Michael Gall Memorial Scholarship Fund  
 Garber Buick Drive Your Community Scholarship  
 Joe H. & Roseanne S. Gardner Scholarship Fund  
 Mary Ellen Gase Scholarship Fund  
 Sally A. George Scholarship Fund  
 Dr. Foster B. Gibbs Scholarship Fund  
 Great Lakes Safety Training Center Endowed Scholarship  
 Joseph M. Godard Memorial Scholarship  
 Golds Alumni Scholarship  
 John and Florence Goll Memorial Scholarship  
 Guadalupe "Lupe" Gomez Scholarship Fund  
 Gospel Fest Music Arts Scholarship Fund  
 Milton L. Greenebaum Scholarship Fund  
 Bob & Betty Grills Fund  
 Ruth Regina Halcli Fund  
 Ruth Mitchell Hanson Scholarship Fund  
 Frank & Jean Harris Scholarship  
 Lawrence C. Hazen, D.O. Scholarship  
 Pat Hendrick Memorial Scholarship Fund  
 Heritage Academic Boosters Scholarship Fund  
 Herlihy-Grant Memorial Scholarship Fund  
 Judith Heavenrich Scholarship Fund  
 Carrie B. Hines Endowment Scholarship  
 Joe Hodson Scholarship Fund  
 Holland Scholarship Fund  
 Iles Family Scholarship  
 Clarence A. "Buck" Iles Scholarship  
 Douglas C. Iles Memorial Scholarship  
 Indo-Pak Scholarship Fund  
 Fred A. Ittner Scholarship Fund  
 Brian Jackson Scholarship  
 Jennifer L. Jackson Memorial Scholarship Fund  
 Reneé Johnston Scholarship  
 Jack B. Jonker Saginaw Choral Society Fund  
 Ashton B. Joseph Scholarship Fund  
 Junior League of the Great Lakes Bay Region Scholarship Fund  
 Kappa Alpha Psi Scholarship Fund  
 Mildred Culbert Kelly & Fred W. Kelly Scholarship  
 William & Helen Kempf Music Scholarship

Martin Luther King, Jr. Regional Scholarship  
 James P. Konieczka Memorial Scholarship  
 Kostrzewa/Sivey Educational Fund  
 Val & Julie Kostrzewa Memorial Scholarship  
 Val R. Kostrzewa Music Scholarship  
 Steven Kyle Kowalewski Memorial Scholarship  
 Jason Kowolski Scholarship  
 Karen A. Krogman-Weadock Memorial  
 Scholarship Fund  
 Tom Krzyzaniak Scholarship Fund  
 Dr. Brian D. Kubczak Memorial Scholarship  
 Endowment Fund  
 Larry Laeding Scholarship Fund  
 Toby Larkin Scholarship  
 Kenneth H. MacDonald, Sr. Broadcasting  
 Scholarship Fund  
 Gene & Donna Mallak Memorial Scholarship  
 Harry E. Martin Memorial Scholarship Fund  
 Heather & Shannon Mayes Scholarship Fund  
 Ken & Ellen McAllister Scholarship Fund  
 Daniel M. McConnell Memorial Scholarship Fund  
 Judge Gary R. McDonald Memorial Scholarship Fund  
 Donald R. McGee Memorial Scholarship Fund  
 Joana D. McKeoun Memorial Scholarship Fund  
 Lee Essie and Charlie McMillan, Jr. Scholarship Fund  
 A.C. "Kate" & Leo Joseph Merlone Scholarship Fund  
 Meyer-Simon Latin Scholarship Fund  
 MLive/The Saginaw News Scholarship Fund  
 Michigan CardioVascular Institute Foundation  
 Michigan State University Alumni Association of  
 Saginaw County  
 Michigan Sugar Company Employee  
 Scholarship Fund  
 Dennis A. Miner Scholarship  
 Karen (Basner) Vayre Moll Memorial Scholarship  
 Morley Travel Scholarship Fund  
 Dr. Charles E. Mueller Scholarship Fund  
 National Association of Insurance and  
 Financial Advisors Scholarship Fund  
 Nexteer Scholarship Fund  
 Nexteer Skilled Trade Scholarship  
 Elbert Curtiss & Margaret Nienstedt Fisher  
 Scholarship Fund  
 Gene & Shirley Nuckolls Scholarship Fund  
 Omega Psi Phi Fraternity Scholarship Fund  
 Dr. Raquel Ontiveros Memorial Scholarship Fund  
 Optimist Club of Saginaw "Officer Ed" Nowaczyk  
 Scholarship Fund  
 Marjorie A. Orr Scholarship Fund  
 Thomas P. Orr Scholarship Fund  
 Our Littlest Angels Fund  
 Margaret L. Palmer Scholarship Fund  
 Perceptions Scholarship  
 Edward F. Petzko Student Athlete  
 Scholarship Fund  
 Positive Results Downtown  
 Jerrold E. Potts Scholarship Fund  
 Carolyn Pugh Memorial Scholarship  
 Bud & Katherine Rae Aviation Scholarship Fund  
 Jerry Redeemer Memorial Scholarship Fund

Harold & Bernadine Reiss Scholarship Fund  
 Jason Richardson Turnaround Scholarship Fund  
 George William Roe's Pursuit of Hospitality  
 Scholarship  
 Saginaw Area Health Care Administrators  
 Scholarship Fund  
 Saginaw Black Nurses Association –  
 Nell Kelly Scholarship Fund  
 Saginaw Choral Society Joanne Robertson  
 Memorial Scholarship Fund  
 Saginaw Community Foundation Endowed  
 General Scholarship Fund  
 Saginaw Country Club Golf Scholarship Fund  
 Saginaw County Association of Retired School  
 Personnel Scholarship Fund  
 Saginaw County Child Development Center  
 Scholarship Fund  
 Saginaw County Sports Hall of Fame Scholarship  
 Saginaw Education Association Scholarship Fund  
 Saginaw High School Alumni Memorial  
 Scholarship Fund  
 Saginaw High School Class of 1970 Scholarship Fund  
 Saginaw High School Class of 2001  
 Saginaw Social Service Club, Norman D. Osborne  
 Scholarship Fund  
 Saginaw Township Business Association  
 Scholarship Fund  
 Saginaw Valley Ag Heritage Scholarship Fund  
 St. Charles Community Schools Foundation  
 Scholarship Fund  
 St. Charles Haunted House Association Scholarship  
 Susan J. Sauer Hospitality and  
 Sports Management Scholarship  
 Ronald J. Schauman Trades Scholarship  
 Louis R. & Helen E. Schwartz FFA Scholarship Fund  
 Stuart Schweigert Scholarship Fund  
 Kelvin W. Scott Memorial Scholarship Fund  
 Jerry L. Seese, Ed.D. Education Scholarship Fund  
 Bernie Smillie Memorial Fund  
 Albert Smith Conservation Scholarship  
 Sherrill L. Smith Music Scholarship  
 Daniel D. Smothers Memorial Scholarship  
 Sons of Italy Scholarship Fund  
 Paul C. & Anita M. Spadafore Family Scholarship  
 Evelyn Faye Spates Memorial Scholarship Fund  
 Clifford H. Spicer Memorial Scholarship Fund  
 Robert E. Stark & Martin H. Stark Scholarship Fund  
 Fred R. Strutz Family Memorial Scholarship Fund  
 Nellie I. Kerry & Paul Sutherland Scholarship Fund  
 Swan Valley High School Scholarship  
 Foundation Fund  
 Swanhaven Manor Retirement Community  
 Scholarship  
 Synergy Medical Education Alliance Scholarship Fund  
 Team One Credit Union Scholarship Fund  
 Ron Thomas Memorial Scholarship Fund  
 Pam Thompson Scholarship in Chemistry  
 Thomas and Patricia Tilot Memorial  
 Scholarship Fund  
 Heather Ueberroth Scholarship  
 University of Michigan Alumni Club of Saginaw

Endowment Fund  
 Robert Dale Urbain Memorial Scholarship  
 Betty & Melvin VanOchten Team One  
 Scholarship Fund  
 CAC/Robert L. Viera Community Service  
 Scholarship Fund  
 Paul & Deanna Virciglio Education Fund  
 Patricia Wagner and Kwan Scholarship  
 Steve Wagner Scholarship Fund  
 Brandon Walker "BW" Memorial Scholarship Fund  
 Cosby Watson Nursing Scholarship Fund  
 Thomas J. and Barbara J. Weadock Scholarship Fund  
 Lisa Krukowski-Whalen Nursing Scholarship Fund  
 Grace M. Williams and Mary K. Williams  
 Scholarship Endowment  
 Marlin N. Wilson and Bertha H. Wilson  
 Memorial Scholarship  
 Terrance Lavell Winters Scholarship  
 Women of Colors, Inc. Scholarship Fund  
 Women Giving to Women Scholarship Fund  
 Yellow Dog Studios Memorial Scholarship  
 Claire Yost Memorial Scholarship  
 Zonta Club of Saginaw Scholarship Fund

## Unrestricted Funds

Betsey G. Arnold Fund  
 Thomas & Margaret Cavanaugh Day & Children  
 Mike & Linda Elliott Fund  
 King Family Fund  
 Kresge Community Match Fund  
 Kresge Community Partner Fund  
 Kenneth G. Marks Fund  
 James W. Marx, Eleanor A. Marx & James T. Marx  
 Endowment Fund  
 Edward & Donna McKinley Family Fund  
 Margaret McKinley Snelling Family Fund  
 John & Marian Olfer Fund  
 W. Henry & Greta K. Pendell Family  
 Foundation Fund  
 Pringing Family Fund Jack & Connie Rehmman  
 Family Fund  
 SCF Unrestricted Endowment Fund SCF  
 Unrestricted Trust Fund Raymond J. Schultz &  
 Monica E. Schultz Fund  
 Shaheen Family Fund Charlotte Stenger  
 Endowment Fund  
 Charles G. & Mary Straebel Thomas Family Fund  
 Marion Stenger Endowment Fund  
 Kenneth M. White Fund  
 Mary K. Williams Endowment Fund  
 Harvey Randall Wickes Foundation Fund  
 Melvin L. & Hilda J. Zuehlke Fund

# 2018 Grants

Each year we fulfill our mission to honor our donor's wishes and bring community initiatives to life across Saginaw County – and beyond. Here is a listing of the programs, projects and initiatives we were able to support during 2018. Visit our website at [saginawfoundation.org/site/grants](http://saginawfoundation.org/site/grants) to learn more about the variety of grant programs we have available.

## Agency Grants 2018 Total: \$400,788.87

Agency Grants are supported by Agency Funds which are established by nonprofit organizations for their benefit.

### Bridge Center for Racial Harmony

Annual distribution • \$3,000.00

### Carrollton Public Schools

Annual distribution • \$4,768.00

### Children's Zoo at Celebration Square

Annual distribution • \$31,753.00

### City Rescue Mission of Saginaw, Inc.

Annual distribution • \$21,870.00

### Delta College Broadcasting

Annual distribution • \$8,204.00

### Frankenmuth Historical Association

Annual distribution • \$24,592.00

### Greater Frankenmuth Area

### Community Foundation

Annual distribution • \$8,045.00

### Hidden Harvest

Annual distribution • \$40,338.00

### Junior Achievement of

### North Central Michigan

Annual distribution • \$9,018.00

### Michigan Lutheran Seminary Foundation

Annual distribution • \$572.00

### Mid-Michigan Children's Museum

Annual distribution • \$10,000.00

### Norman Westlund Child Guidance Clinic

Annual distribution • \$3,811.27

### Public Libraries of Saginaw

Annual distribution • \$16,500.00

### Saginaw Art Museum

Annual distribution • \$23,275.00

### Saginaw Bay Symphony Orchestra

Annual distribution • \$56,500.00

### Saginaw Choral Society

Annual distribution • \$5,946.00

### Saginaw County Animal Care Center

Annual distribution • \$8,352.00

### Saginaw County Chamber Foundation

Annual distribution • \$7,662.00

### Saginaw Intermediate School District

Assist families to receive quality childcare

\$20,000.00

Preschool scholarships • \$4,496.00

### Saginaw Township Community Schools

Mini-grants for 2018-2019 school year

\$44,922.60

### St. Charles Community Schools

Annual distribution • \$11,177.00

### Thomas Township

Annual distribution • \$24,507.00

### Thomas Township Library

Annual distribution • \$8,252.00

### Water and Woods Field Service Council,

### Boy Scouts of America

Annual distribution • \$3,228.00

## Designated Grants 2018 Total: \$304,565.15

Designated Grants are supported by Designated Funds established by donors wanting to support a specific organization or accomplish a specific purpose. See a complete listing of these funds on page 28.

### American Cancer Society

Annual distribution • \$4,866.00

### Andersen Enrichment Center

Annual distribution • \$30,760.00

### Bay Arenac Intermediate School District

Preschool scholarships • \$2,248.00

### Children's Zoo at Celebration Square

Support Celebration Square Carousel

\$33,560.00

### Covenant HealthCare Foundation

Annual distribution • \$13,880.15

### First Presbyterian Church

Saginaw Strings – Fall Session • \$970.00

### Frankenmuth United Methodist Church

Saginaw County for benevolence only • \$5,071.00

### Freeland Community School District

William E. Shephard Band Scholarship recipients  
\$862.50

### Hidden Harvest

Annual distribution • \$9,783.00

### Hospital Hospitality House

Annual distribution • \$7,021.00

### Humane Society of Saginaw County

Annual distribution • \$4,866.00

### Lions Clubs International Foundation Division

Annual distribution • \$11,642.00

### Mayo Foundation – Department of Development

Annual distribution • \$11,642.00

### Midland County Educational Service Agency

Preschool Scholarships • \$2,248.00

### Mid-Michigan Children's Museum

Annual distribution • \$2,000.00

### Power of Dad

Annual distribution • \$200.00

### Public Libraries of Saginaw

Annual distribution • \$4,867.00

### Saginaw Area Catholic Schools

Maria Elizabeth Paquette Scholarship • \$350.00

### Saginaw Bay Symphony Orchestra

Annual distribution • \$822.00

### Saginaw Choral Society

Annual distribution • \$2,008.00

### Saginaw Intermediate School District

Annual distribution • \$1,000.00

### Saginaw Public Schools

SASA Teacher Grants • \$2,500.00

Stand Up Awards • \$10,000.00

Support Saginaw High School, Zilwaukee School,

and Arthur Eddy Elementary School • \$6,029.00

Teacher mini-grants • \$2,500.00

### Saginaw Valley Historic Preservation Society

Night lighting for the Jackson/Church/Wilcox

mural, repair of the Carrollton Bar neon sign, and

lumber to repair the Cushway House porch

\$1,600.00

### Saginaw Valley State University Foundation

Ruth and Ted Braun Fellowship Program

\$75,000.00

Maynard L. Smith, Jr. Scholarship • \$16,748.00

### St. Charles Community Schools

2018 Scholarships • \$5,000.00

### St. John's Episcopal Church

Annual distribution • \$9,022.50

### The Salvation Army

To benefit Saginaw County • \$1,537.00

### The Salvation Army – Northern DHQ

To benefit Lyon County • \$3,104.00

### The Salvation Army of Muscatine

To benefit Muscatine County • \$2,717.00

### Thomas Township Library

Annual distribution • \$500.00

### Underground Railroad

Annual distribution • \$9,783.00

### United Way of Muscatine County

To benefit Muscatine County • \$2,717.00

### United Way of Saginaw County

To benefit Saginaw County • \$1,537.00

### United Way of Southwest Minnesota

To benefit Lyon County • \$3,104.00

### YMCA of Saginaw

2018 Youth Programs • \$500.00



## Donor Advised Grants 2018 Total: \$504,435.00

Donor Advised Grants are supported by Donor Advised Funds which enable donors to be personally involved in grantmaking by suggesting grants, subject to board approval. See a complete listing of these funds on pages 29-30.

### **American Chemical Society, Midland Section**

STEM Outreach Projects 2019-2020 • \$5,000.00

### **Bay Area Women's Center**

Spirit Sponsorship • \$2,000.00

### **Boys & Girls Clubs of the Great Lakes Bay Region**

STEM Center of Innovation/Computer Lab  
\$15,968.00

### **Bridgeport-Spaulding Community Schools**

Bridgeport Middle School STEM Challenge  
\$1,200.00

### **Buena Vista Fire Department**

Fire Safety Trailer • \$4,500.00

### **Carrollton Public Schools**

Carrollton High School Scholarship • \$1,000.00  
Carrollton Elementary Musical Theater • \$1,000.00

### **Chesaning Union Schools**

Chesaning High School Key Club • \$1,000.00

### **Children's Zoo at Celebration Square**

General support • \$1,000.00

### **City Rescue Mission of Saginaw, Inc.**

General support • \$11,000.00

### **Countryside Academy**

Field Trip transportation support • \$200.00

### **Covenant HealthCare Foundation**

Annual Campaign • \$1,000.00

### **CTE for Saginaw County**

Assist with Career Technical Education outreach  
\$10,000.00

### **Delta College Foundation**

Possible Dream Campaign • \$1,500.00

### **The Diaper Alliance**

Diaper Shortfall • \$2,500.00

### **East Side Soup Kitchen**

General support • \$12,000.00

### **Education and Training Connection**

English as a Second Language program  
\$2,500.00

### **Exceptional Horseback Riders of Saginaw County**

Stable Scholarship Program • \$9,433.00

### **First Presbyterian Church**

Saginaw Strings - Winter Session • \$1,880.00  
Saginaw Strings - Spring Session • \$1,885.00

### **First Ward Community Service**

Saginaw Gators • \$2,000.00

### **Friends of Shiawassee National Wildlife Reserve**

Support SEEDS Youth Conservation Corp program  
\$5,000.00

### **Great Lakes Bay Foundation**

Support STEM scholarships for travel/field trips  
\$20,000.00

### **Greater Saginaw Amateur Hockey Association**

2009 Saginaw Junior Spirit • \$1,000.00  
2007 Meijer AA Hockey Team • \$1,000.00

### **Hemlock Public Schools**

Hemlock Area STEM Center • \$8,000.00  
Hemlock Elementary/Ling Elementary  
Playground • \$4,000.00  
Hemlock High School Robotics Team • \$1,000.00

### **Hidden Harvest**

General support • \$11,100.00

### **Holy Name Catholic School**

Field trip transportation support • \$250.00

### **JDRF**

Team Easton • \$2,000.00

### **The Jewish Welfare Federation of Saginaw Fund**

General support • \$2,000.00

### **Junior League of the Great Lakes Bay Region**

Kids Run the Nation • \$1,500.00

### **Kansas City University of Medicine and Biosciences**

Support the College of Osteopathic Medicine  
Scholarship • \$1,384.00

### **Kentwood Public Schools**

Crestwood Middle School transportation support  
\$200.00

### **Kids Run the Nation – Saginaw**

General support • \$1,500.00

### **Kingdom Builders Ministries, Inc.**

Support Kingdom Builders Ministries • \$6,533.00

### **Kirkville College of Osteopathic Medicine**

Scholarships • \$1,000.00

### **The Leukemia & Lymphoma Society, Inc.**

Leukemia & Lymphoma Society • \$1,000.00

### **Major Chords for Minors**

General support • \$1,500.00

### **Merrill Community Schools**

Merrill Volleyball Team • \$1,000.00  
Merrill High School Student Leadership  
\$1,000.00

### **Michael's Place**

General support • \$1,000.00

### **Michigan State Police – Tri-City Post No. 31**

Community Outreach Materials • \$3,000.00  
Support Bay Area Narcotics Enforcement Team  
(BAYANET) • \$9,000.00

### **Michigan State University**

MSU College of Osteopathic Medicine  
Scholarship • \$1,000.00

### **Mid-Michigan Children's Museum**

General support • \$1,100.00

### **MSU Extension Saginaw County**

Western Winds 4H • \$1,000.00

### **National Inventors Hall of Fame, Inc.**

Camp Invention Summer Enrichment Programs  
in Saginaw • \$2,500.00

### **National Sorority of Phi Delta Kappa**

Phi Delta Kappa Midwestern Regional Conference  
\$2,500.00

### **New Beginnings Enrichment Center**

One Week, One Street • \$4,000.00

### **The New Ezekiel Project**

General support • \$1,000.00

### **PAACT, Inc.**

General support • \$2,500.00

### **Pheasants Forever**

Earth Day Seed Day • \$200.00

### **Pit & Balcony**

General support • \$1,100.00

### **PRIDE in Saginaw, Inc.**

Bringing Back the Ice Campaign • \$3,000.00

### **Public Libraries of Saginaw**

Support Zauel Memorial Library • \$1,000.00

### **Public Schools of Calumet, Laurium & Keweenaw**

Transportation support • \$200.00

### **Pulse3 Foundation**

Building a Heart Safe Community • \$5,000.00

### **READ Association**

Purchase books for RIF program • \$1,000.00  
Summer READ Camp • \$2,500.00  
Raising Readers Academy • \$10,000.00

### **Rotary Club of Saginaw Sunrise Foundation**

Charity Eye Care • \$5,500.00

### **Saginaw Area Catholic Schools**

Nouvel Catholic Central Elementary • \$1,000.00

### **Saginaw Arts & Enrichment Commission**

General support • \$1,000.00

### **Saginaw Basin Land Conservancy**

Saginaw Pollinator Project • \$1,000.00

### **Saginaw Bay Symphony Orchestra**

General support • \$1,000.00

### **Saginaw Community Foundation**

Bridge the Gap • \$2,500.00

### **Saginaw Career Complex**

Support of travel expenses for Health Occupations  
Students of America National Leadership  
Conference • \$1,000.00

### **Saginaw Catholic Mustard Seed Foundation**

General support • \$6,533.00

### **Saginaw Choral Society**

General support • \$1,000.00  
Saginaw Youth Choir • \$2,000.00

### **Saginaw County Business & Education Partnership**

General support • \$1,000.00

### **Saginaw County Community Action Committee**

General support • \$1,000.00

### **Saginaw County Sports Hall of Fame**

Support Saginaw County Golf Association  
\$300.00

### **Saginaw County Youth Protection Council**

General support • \$1,000.00

### **Saginaw Future, Inc.**

Annual campaign • \$1,000.00

### **Saginaw Kiwanis Foundation**

Saginaw Golds 10U • \$1,000.00  
Michigan State Police Law Enforcement  
Academy • \$425.00  
Saginaw Golds 14U • \$1,000.00

### **Saginaw Police Department**

Saginaw Police Reserve Vehicle • \$2,500.00

### **Saginaw Public Schools**

Arthur Hill High School Scholarship • \$1,000.00  
Saginaw Public Schools Teacher Grants  
\$11,316.00

Arthur Hill Class of 2019 • \$1,000.00

Arthur Hill High School Cognitive/Emotionally

Impaired Special Education Program • \$1,000.00

Arthur Hill Cheer Team • \$1,000.00

Annual teacher mini grants and scholarships  
\$25,000.00

### **Saginaw Spirit Foundation**

2005 Saginaw Junior Spirit Hockey Team  
\$1,000.00

## Donor Advised Grants *continued*

### **Saginaw Township Community Schools**

Heritage High School Pom Pon Team  
\$1,000.00  
Sherwood STEM Room • \$1,000.00  
STCS Drama Department • \$1,000.00  
Support Hemmeter Elementary School  
Destination Imagination Team to attend global  
finals • \$1,000.00

### **Saginaw Valley Agricultural Association, Inc.**

Grandstand Improvement and Accessibility  
(Phase 1) • \$8,000.00

### **Saginaw Valley State University**

Saginaw Write Now: Community and High School  
Writing Centers • \$4,000.00  
Girls Who Code/We Code • \$5,000.00  
College of Business programming • \$50,000.00  
Support students attending Chief Science Officers  
Conference in Washington, D.C. • \$3,500.00

### **Saginaw-Shiawassee Habitat for Humanity**

Equipment Upgrade • \$5,000.00  
General support • \$1,000.00  
Veterans Home Repair Program • \$1,000.00

### **St. Charles Public Library**

Growing Our St. Charles District Library  
\$18,000.00

### **St. Dominic Parish**

General support • \$1,000.00

### **St. Mary's of Michigan Foundation**

General support • \$1,000.00  
Support regional diabetes program • \$5,000.00  
Support Seton Cancer Institute • \$1,000.00

### **St. Peter Lutheran School**

Chicago Trip • \$1,000.00

### **The Salvation Army**

General support • \$12,000.00

### **Special Olympics**

General support • \$1,000.00

### **Swan Valley School District**

Swan Valley High School Girls Soccer Team  
\$1,000.00

### **Thornapple Kellogg School District**

Lee Elementary field trip transportation  
\$200.00

### **Tri-City Hindu Temple**

General support • \$1,000.00

### **Underground Railroad**

General support • \$13,600.00  
Girls on the Run program support • \$2,500.00

### **United Way of Saginaw County**

Light Up the City • \$1,000.00

### **Water and Woods Field Service Council, Boy Scouts of America**

Saginaw Scoutreach Pinewood Derby • \$2,500.00

### **Welcome Table**

General support • \$56,353.00

### **Westcoast Black Theatre Troupe of Florida**

Heart & Soul Campaign • \$5,000.00

### **YMCA of Saginaw**

General support • \$150.00.  
Herter Music Camp Scholarship • \$425.00  
Kids CampUs Capital Campaign • \$8,000.00  
Strong Kids Campaign • \$4,000.00

### **Youth MOVE Saginaw**

Support conference attendance • \$1,000.00

## Unrestricted and Field of Interest Grants 2018 Total: \$510,658.82

Unrestricted and Field of Interest Grants are supported by Unrestricted and Field of Interest Funds established by donors.

See a complete listing of these funds on pages 30-31.

### **American Chemical Society, Midland Section**

Outreach for Saginaw County 2019-2020  
\$3,000.00

### **Ann Herzberg Dance Studio**

Nancy Claramunt Dance Scholarships • \$2,250.00

### **Boys & Girls Clubs of the Great Lakes Bay Region**

KidsCampUs – Security System • \$5,250.00  
Saginaw STEM Lab • \$5,000.00

### **The Community Caring Closet, LLC**

Community Caring & Learning Garden • \$6,068.00

### **Central Michigan University**

Assist three Birch Run High School Band students  
to attend band camp • \$900.00

### **Chesaning Union Schools**

Chesaning FFA Agri-Science Barn Expansion  
\$16,150.00

### **Child Abuse and Neglect Council Great Lakes Bay Region**

Make Parenting a Pleasure • \$10,000.00

### **City of Light Community Development Corporation**

City of Light Summer Youth Program  
\$6,000.00

### **Council of Michigan Foundations**

2018 Annual Dues • \$17,300.00  
Robert S. Collier Public Policy Endowment Fund  
\$5,000.00

### **Downtown Saginaw Farmer's Market, Inc.**

Power of Produce (POP) Club • \$3,500.00

### **Emmaus House**

House 2 Renovation and Security Camera  
\$15,000.00

### **First Ward Community Service**

Literacy Arts Cultural Enrichment Recreation  
(LACER) Summer Day Camp 2018 • \$5,000.00

### **Fish Tales**

2018 Program support • \$4,600.00

### **Frankenmuth Dance Center**

Nancy Claramunt Dance Scholarships • \$1,000.00

### **Friends of Theodore Roethke**

Child on Top of a Greenhouse Language Arts  
Review and Art Camp • \$5,100.00

### **Great Lakes Bay Foundation**

Great Lakes Bay Region Middle School  
Mathematics Project • \$18,900.00

### **Hemlock Public Schools**

Hemlock Area STEM Center • \$14,000.00  
Hemlock/Ling Elementary Playground Upgrade  
\$10,000.00

### **Historical Society of Bridgeport**

Roof and Eaves for Red Barn Museum • \$5,000.00

### **Houghton-Jones Neighborhood Task Force**

Summer Youth Enrichment Program • \$3,000.00

### **Kingdom Builders Ministries, Inc.**

Community Improvement Initiative Matching  
Funds • \$5,000.00

### **Major Chords for Minors**

Growing Community Music Performances  
\$15,000.00

### **Merrill Community Schools**

Engaging Families in Education • \$8,000.00

### **NAACP – Saginaw Branch**

ACT-SO • \$8,000.00

### **National Inventors Hall of Fame, Inc.**

Camp Invention Summer Enrichment Programs  
in Saginaw • \$7,500.00

### **New Beginnings Enrichment Center**

One Week, One Street • \$5,000.00

### **The New Ezekiel Project**

H.M. Boyd Community Garden Ground Breaking  
\$5,000.00  
The Great Mural Project - Saginaw: Phase I  
\$2,475.00

### **Pit & Balcony**

2018-2019 Season • \$7,500.00  
"Class Act" Summer Youth Theatre Workshop  
\$7,500.00

### **Police Chief's Association of Saginaw County**

Simunition Program • \$1,000.00

### **PRIDE in Saginaw, Inc.**

Morley Plaza Christmas lighting project  
\$1,000.00

### **READ Association**

Raising Readers Academy • \$10,000.00

### **Saginaw African Cultural Festival Committee**

Saginaw African Cultural Festival • \$5,000.00

### **Saginaw Area City Band**

Sharing the Gift of Music • \$2,500.00

### **Saginaw Arts & Enrichment Commission**

New tables and projector screen • \$2,926.32

### **Saginaw Bay Symphony Orchestra**

SBSO Welcomes Seniors • \$8,100.00

### **Saginaw Choral Society**

#WeAreSaginaw and Saginaw Youth Choir  
\$7,000.00

### **Saginaw Community Foundation**

Opportunity Support: Bearinger Fireproof  
Building Redevelopment • \$12,500.00

### **Saginaw County Community Action Committee**

Minor Home Repairs Project • \$30,000.00

## Unrestricted and Field of Interest Grants *continued*

**Saginaw County Youth Protection Council**  
Capacity Building: Branding & Marketing  
\$5,015.00

**Saginaw Valley Agricultural Association, Inc.**

Saginaw County Fair Dog Program • \$10,000.00  
Grandstand Improvement and Accessibility  
(Phase 1) • \$10,000.00

**Saginaw Valley Historic Preservation Society**

Jackson, Church & Wilcox Mural • \$1,500.00

**Saginaw Valley State University**

Marshall M. Fredericks Sculpture Museum – 2019  
Exhibition Program • \$13,241.50

Girls Who Code/We Code • \$3,235.00

Mid-Michigan Children's Museum/SVSU Gallery  
Partnership • \$2,000.00

Millet Learning Center Wheelchair Ball Launcher  
Project • \$4,150.00

Saginaw Write Now: Community and High School  
Writing Centers • \$8,300.00

**Saginaw-Shiawassee Habitat for Humanity**  
Neighborhood Revitalization • \$15,000.00

**St. Charles Public Library**

Growing Our St. Charles District Library  
\$10,000.00

**St. Mary Cathedral**

Cathedral District Children's Festival • \$3,000.00

**Underground Railroad**

Girls on the Run Saginaw Bay • \$8,600.00

Safety and Resource Center Control System

Upgrade \$10,798.00

**Valley Lutheran High School**

Growing Campaign • \$15,000.00

**Village of St. Charles**

Coal Miners' Park Universal Play Initiative

\$50,000.00

**Water and Woods Field Service Council,  
Boy Scouts of America**

Saginaw Scoutreach • \$2,300.00

**YMCA of Saginaw**

KidsCampUs Capital Campaign • \$25,000.00

**Youth MOVE Saginaw**

Support conference travel expenses • \$500.00

## general Grants program

Each year, the Saginaw Community Foundation infuses thousands of dollars back into the Saginaw County community in the form of grantmaking. Through its multiple grant programs and funds, the foundation supports a wide variety of programs and projects with the focus of improving the quality of life in Saginaw County's communities.

### Who can apply for a grant?

Other than grants made to individuals through designated scholarship funds, grants will be made only to those 501(c)(3) nonprofit organizations, local units of government and religious institutions requesting funds to support programs or projects benefiting the citizens and communities of Saginaw County. Grants will be made for a wide variety of programs and purposes benefiting the citizens and communities of Saginaw County. Grants are typically made for one year.

### What types of programs and projects does the Saginaw Community Foundation support?

The foundation is particularly interested in funding:

- Projects enhancing and preserving the quality of life in Saginaw County
- Projects not adequately being served by existing community resources
- Projects providing leverage for generating other funds and community resources
- Projects facilitating cooperation and collaboration between organizations

Grants usually do not support operating budgets, basic municipal services, basic educational functions, endowment campaigns, previously incurred debt and sectarian religious programs. Low priority is given to requests for travel for groups such as school classes, clubs or sports teams. The foundation does not give grants to individuals, including requests for utility payments and food. If you need this kind of support, call 211.

### Application process

To begin the application process, contact Kendra Kempf at (989) 755-0545. She will review your proposed project for eligibility, as well as answer your questions. Appropriate programs will be assigned a grant number, which must be included on your application. Once your full proposal is received, SCF will conduct a comprehensive review.

For additional information, visit the Grants section of our website at [saginawfoundation.org](http://saginawfoundation.org).

# a village of Supporters

Listed here are the names of individuals, corporations, organizations and foundations who supported Saginaw Community Foundation in 2018. **Thank you for your support!**

1Bid.US Online Auctions  
1st State Bank  
4G Hospitality LLC  
A & B Plumbing, Heating & AC, Inc.  
A Place For Grace Child Care, LLC  
A Touch Of Class Beauty Salon  
A.P.O.A.  
Dave and Kathy Abbs  
Jason & Susan Achtabowski  
Victoria Adams  
Aubrey Adams  
Adams Boulevard Area  
Neighborhood Association  
Herma and Earl Addison  
Advanced Magnet Source Corporation  
Advanced Racing Technologies  
Agapé Plastics, Inc.  
Catherine Agnew  
Norma Agnew  
Arthur & Lera Aikin  
Dr. Waheed Akbar  
Syed and Mussarat Alam  
Mrs. Sheryl M. Alger  
All Seasons Skin and Surgery  
Allegro MicroSystems, LLC  
Katharine H. Almirall  
Andrea Alvarez  
Duane and Debra Alverson  
Amazin' Mitten  
AmazonSmile  
American Business Women's  
Association - Saginaw Charter Chapter  
American Furukawa, Inc.  
Don Ancypa  
Frank N. Andersen Foundation  
Stanley Anderson  
Karen Andon  
Alfred Anger  
Anonymous (5)  
Susan Arbanas & Kenneth Peterson  
Stephanie Arch  
Ellen Archambeau  
Chrytal Argumedo  
Roselyn D. Argyle  
Randy & Michelle Armstrong  
Diane Arnold  
Bonnie Arnst  
Patricia Arvilla  
Taylor Arvilla  
Ascension  
AT&T  
Jill Attarpour  
Jennifer and Khalil Attie  
Donald & Mary Lou Aulbert  
Andrew Ault  
Thomas & Patricia Austin  
Austin Day Celebration Fund  
Automotive Sales Group  
Colleen and Paul Avery  
Award & Sports  
B.E.A.M. Industries, Inc.  
Baby Ellie Auto Spa  
Liana & Donald Bachand  
Peter Bagley & Jacqueline Doig  
Laura L. Bailey  
Susan & Thomas Bailey

Cindy Baillie  
Anthony Baldrice  
Valerie & Christopher Baldwin  
C. D. Ballard  
Dennis & Michelle Ballinger  
Norm & Nancy Bamberger  
Bank of America Charitable Foundation  
Baptist Birthday Celebrants  
Wendi and Kyle Barber  
Michael and Diane Barnes  
Nickolas & Jennifer Barris  
C. John Bauer  
Joyce Baugh  
Diane and James Baumgartner  
Bavarian Inn Motor Lodge, Inc.  
Bay Area Association of Michigan  
Plumbing and Mechanical Contract  
Bay City Branch of The NAACP  
Bay City Yoga, LLC  
Kenneth & Carol Baybeck  
Sussan and Ronald Bays  
Jean Rockwell Beach  
Judith & Thomas Bear  
Paul Begick  
Brent & Regina Behm  
Benjamin & Elizabeth Bell  
Kenneth & Shirley Bell  
Dr. Joel & Katie Beltran  
The Benevity Community Impact Fund  
Ashley Bengel  
Alvin George Benson Irrevocable Trust  
Albert M Bernat  
Lois & Raymond Berry  
Douglas and Amy Best  
Bethel A.M.E. Church  
Beyer Roofing Company, Inc.  
Jon and Heather Beyerlein  
Roberta J. Bidwell  
Patricia Bierlein  
Bierlein Companies Foundation  
John and Diann Binder  
Joan & John Bintz  
Marianne Bird  
Harry and Vicki Blair  
Poppy & Kevin Blasch  
Anne Blaskowski  
Emily Bloom  
Craig Blower  
Blue Lagoon of Saginaw, Inc.  
Dorothy Bodeis  
Christy and Steve Boehler  
Trish Boersma  
Wendy Boes  
Jacqueline Boettcher  
Heidi Bolger & David Wallace, DVM  
Jane and Joseph Bommarito  
Tina Bond  
David and Renee Bonk  
Steven Bonnell  
Hon. Fred & Joyce Borchard  
David Bosco  
Nancy Boudreau  
James Bourcier  
Kathleen and Jean Bourcier  
Bourdow Contracting, LLC  
Arnold & Gertrude Boutell Memorial Fund

Mr. John Bovill, III  
Barbara and Lawrence Bowman  
Chad and Jordan Boyce  
Hon. Christopher Boyd  
Peter & Barbra Boyse  
Robert Bradley  
Thomas & Stephanie Braley  
Colleen Brandimore  
Mr. Timothy J. Braun  
Ruth Braun  
Clara Bremer  
Rochelle Brewer  
Bridgeport Days Festival  
Bridgton Place  
Bill and Michele Bringer  
Wallace & Irene Bronner Family  
Charitable Foundation  
Harold & Mary Brown  
Joyce Brown  
Beverly Brown  
Mary and Charles Brown  
Pete & Ginny Brucker  
Todd & Julie Brundrett  
Bublitz Photography  
Janice and Clifford Buchman  
Margo Buck  
Gertrude Budd  
Paul Bujalski  
Stephanie Bujouves  
Brent Bujouves  
Diann and Timothy Burch  
Susan and Charles Burda  
Chris Burditt  
Sue Burns  
Terri and Gary Burr  
Chelsea Burton  
George and Mary Bush  
John & Kathryn Bushroe  
Linda Bussell  
Michael Butman  
C & M Home Appliances  
C&U Americas  
Matt and Kim Cairy  
Reid Calcott, D.D.S.  
Rocco Calice  
Dean Call  
Bob & Betty Callaghan  
James Callahan, Jr.  
James & Sharon Callahan  
John Cammin  
Marilyn and Gary Campbell  
Cantor Colburn LLP  
Peter & Sue Capling  
Capstan Atlantic  
Caravan Facilities Management, LLC  
Lynn & Diane Card  
Robert & Josette Card  
Michael Carlson  
Sally B. Carney  
Thomas Carr  
Norah Carroll  
Paula and Gordon McAllister  
Carrollton Lions Club  
Carrollton Public Schools  
Carrollton Zilwaukee Eagles Aerie 4413  
Mary Lou Case & William I. Snyder

Dave & Sheri Case  
W.L. Case and Company Funeral Directors  
Catholic Federal Credit Union  
Bonnie Cavendish  
Odessa Caver  
Elsie and Thomas Cawley  
Centri Healthcare, LLC  
Danny Cerrone  
Certech  
Marc Cesere  
Connie Cessante  
Shaunne Chacon  
Helen Chaklos  
Catherine Champagne  
Champagne & Marx Excavating, Inc.  
Lavern Chandler  
Mark Chapman  
Charlie's Corner Platinum Wireless  
Charlton  
Chemical Bank  
Sharon and Dale Chenette  
Debra and Robert Cherry  
Karolyn and Robert  
Child Abuse and Neglect Council  
Great Lakes Bay Region  
Iris and Dan Childs  
Paul and Annette Chmielewski  
Christ Community Church  
Jeanette Christensen  
Circle Michigan  
City Of Coldwater  
School District of the City of Saginaw  
City of Saginaw Arts & Enrichment  
Commission  
Morrall & Nancy Claramunt  
Judge Terry L. Clark  
Pamela N. Clark  
Joan and James Clement  
Camille and Jack Cleveland  
Ophelia Cliatt  
John M. Cline  
Cynthia & Victor Clore  
CLS Trucking  
Sarah Coates  
Joann & Steven Coates  
Michael Colby  
Pamela Cole  
Stephen and Stacie Cole  
Cole's Machine, Inc.  
Jeffrey Collet  
Phillip Collins  
Jeanine Collison  
Janice Collison  
Mike & Teresa Colucci  
Committee to Elect  
Bill Federspiel for Sheriff  
Committee to Elect Ralph Martin  
Marla and Kenneth Comtois  
Mary Concannon  
Kathleen Conklin  
David & Roberta Conrad  
Consumers Energy  
Janet Cook  
Daria and James Cooper  
Mary and Ray Cornford  
Corrigan Oil Company and Express Stop

Clifford Coston  
 Carol Cottrell  
 Thomas Coughlin  
 Coughlin Ventures, Inc.  
 Council of Michigan Foundations  
 County of Saginaw  
 Anne & John Coursey  
 Covenant HealthCare  
 Dr. Kathleen Cowling  
 Cracker Barrel  
 Don and Pat Crandell  
 Janet J. Crane  
 Judge & Mrs. William Crane  
 Ellen Crane & Peter Freigang  
 Jay & Leisa Crane  
 Tim & Susan Crane  
 JoAnn T. Crary  
 Laura Crase  
 Beth and Michael Craun  
 Creative Cuts  
 Holly and Matthew Crews  
 Debra and Gary Crist  
 Marcia & Charles Cross  
 Constance M. Crawl  
 Ivy Crudup  
 Culligan Water  
 Shirley Culpepper  
 Ann & James Curran  
 Robert Currie  
 Ryan and Stephanie Curtis  
 Custom Design And Manufacturing  
 CW Bearing USA, Inc.  
 Maryann and James Czolgosz  
 D & D Parnters, LLC  
 D & R Earthmoving, LLC  
 Marianne Dafoe  
 Tom & Culli Damuth  
 Tracy and James Danek  
 Drue and Kristine Darby  
 Margaret Davenport  
 Danielle Davenport  
 Sara and Marshall Davenport  
 Steven & Dawn Davidson  
 Nancy and Charles Davidson  
 Stephanie Davis  
 Dr. Carolyn Davis  
 Frank Davis  
 Kathie Davis  
 Joe and Barb Day  
 Susan and David Day  
 Susan and Harold Day  
 Dennis and Sherry Day  
 Abby and Michael Day  
 DCT Enterprises, Inc.  
 Carol and Hon. Joseph De Francesco  
 Linda DeGuise  
 Gloria DeHart  
 Thomas and Lauren Deisler  
 Lauren and Thomas Deisler  
 Deisler Funeral Home  
 Erica Delgado  
 Delta College  
 Delta Foundation  
 Delta Steel, Inc.  
 Ruth Delude  
 Amy and Benjamin Denay  
 R.L. Deppmann Company  
 K. Lynn Derck  
 Deshano Community Foundation  
 Deutsche Bank  
 Mr. and Mrs. Lou Diechman  
 Dan Dijk  
 Jane and Timothy Dijk  
 Leslie Dill  
 Anthony and Emily Diloreto  
 Brian Dobbins  
 Dobis Landscaping, Inc.  
 Loa and James Dobrosky  
 Jerry Doecker  
 Thomas Donaghy  
 Denise Doozan  
 Dore Coporation  
 W. Peter and Karen Doren  
 Mr. and Mrs. Steven J. Dork  
 Robert Dotson  
 Mary Ellen and William Doty  
 Craig and Joan Douglas  
 Dr. and Mrs. Paul Douglas  
 Douglas MacArthur High School  
 Graduating Class of 1966  
 The Dow Chemical Company  
 Dow Corning Foundation  
 The Dow Event Center  
 Patrick Downes  
 John Doyle  
 George Drain  
 Vernon and Linda Drayton  
 The Drywall Man, LLC  
 Dstreet Entertainment Foundation  
 Sylvia Dubay  
 Duclos Insurance Agency, Inc.  
 Sonya Dudley  
 D. Diane Dudley  
 Natasha Duman  
 Lori Duncan  
 William and Kathleen Duncan  
 Stephen and Grace Dunkle  
 Duperon Corporation  
 Duperon Education, LLC  
 Mary Ann Dupuis  
 DURA Automotive  
 Duro-Last Roofing  
 Becky and Nicholas DuRussel  
 Carol and Jerold Dusek  
 Marilyn Dust  
 Dynacast Ltd  
 Eaton Charitable Fund  
 Family of Leo Eckenswiller  
 Adeline Eckert  
 Roselynn Ederer  
 Mary Lou Ederer  
 Lynn and Ralph Edgington  
 Edward Jones  
 Brian and Lindsay Eggers  
 Laura Elliott  
 Scott Ellis  
 Dean Emerson  
 Patricia Emmenecker  
 Robert and Carol Emrich  
 Karen Engelhart  
 Mr. and Mrs. Gerald L. Enszer  
 Robert Enszer  
 Enszer's Auto Repair, Inc.  
 Jerlean Erby  
 Filiberto and Juanita Escobedo  
 Suellen Estes  
 Patricia Evans  
 Evans & Brownes Funeral Home  
 Evans Contracting, LLC  
 Patricia and John Everhardus  
 Peter and Jill Ewend  
 Barbara Ewend  
 Exceptional Metals  
 Fabiano Brothers, Inc.  
 Janet and Michael Faerber  
 Nancy and Gary Fahndrich  
 Amy and James Fahrenbruch  
 Mary Ann Fairbanks  
 Debbie Falkenberg  
 Family First Credit Union  
 Peter and Karen Fattal  
 Sherwin and Marie Faulk  
 Brad Fechter  
 Fechter Insurance Agency  
 Federal Screw Works  
 Mary Lou and Robert Feldotte  
 Robert and Amanda Felker  
 Linda E. Fettig  
 Floyd and Jane Feusse  
 Elian Fichtner  
 Financial Edge Credit Union  
 Findley Davies Contribution Fund  
 First Assembly of God  
 First Student  
 Mark and Andrea Fischer  
 Caroline Fisher  
 Steven and Ellen Fisher  
 Thomas Fisher  
 Michael and Susan Fjerstad  
 Sue Flattery  
 Ernest Flegenheimer  
 Mark and Anne Flegenheimer  
 Flex Automotive  
 Jennifer and Christopher Florence  
 Ann Flucke  
 Karen and Jeffrey Frahm  
 Bonnie Foote  
 Robert Forbes  
 Jamie Forbes  
 Fordney Club  
 Fordney Club of Saginaw County  
 Catherine and Bryan Forrest  
 Michael Forster  
 forteq Group  
 Jeff and Lydia Fortier  
 Dorothy Foulds  
 Susan Fox  
 Ralph and Marilyn Frahm  
 Jeffrey and Karen Frahm  
 Thomas Frank  
 Frankenmuth Credit Union  
 Frankenmuth James E. Wickson  
 District Library  
 Frankenmuth River Place, LLC  
 Franks Graphic Services  
 Chantal and Jeffrey Franson  
 The Freedom Experience  
 Janet Freeland  
 Freeland Community Sports Association  
 Freeland Lions Club  
 Friends of Phil Phelps  
 Kristi Fritz  
 Michelle Frost  
 Jane and Mark Frost  
 Brooke and Bryan Fulkersin  
 Fullerton Tool Company  
 Holly and John Furlo  
 Louis and Veronica Furlo  
 Timothy Furton  
 Rosalie Galarno  
 Michael and Karen Gallagher  
 Thomas and Elizabeth Gallant  
 Patricia Gallow  
 Melanie Galonska  
 David Gamez  
 Mr. Daniel Garant  
 Marsha E. Garber  
 Garber Chevrolet Saginaw  
 Garber Management Group  
 Benito Garcia  
 Cheryl and Jonathan Gardey  
 Frederick and Anne Gardner  
 Ruthanne Garno  
 Garpiel Group  
 Mary Ellen Gase  
 Carolyn S. Gaus  
 John and Annette Gavit  
 Amy Geer  
 Katie Gehrke  
 Suzi Gerber  
 Steven and Karen Gerhardt  
 Deborah and Robert Gersell  
 Kevin and Becky Gerzseny  
 Gianni's Barber Shop  
 Linda Gibbs  
 Kayla Gies  
 Mary Lu Gilbert  
 Mrs. Patricia Gilbert  
 Donald A. Gilbert, PLLC  
 Joan Gilmour  
 Girl Scouts of Southeastern Michigan  
 Glaster, Inc.  
 GMB Korea  
 Ralph and Constance Gnotek  
 Mary and Richard Goedert  
 Lisa and Johnny Goenen  
 John and Diana Goes  
 Gavin Goetz  
 Trish and Chad Gohm  
 Ben Gombar  
 Allyson and Mario Gonzales  
 Jody and Eric Goodman  
 Marty and Marsha Gottesman  
 Mark Gottleber  
 Mr. and Mrs. James D. Gough  
 Graebner Excavating, Ltd.  
 Christine Graham  
 Christy Graham  
 Donna and Mark Grai  
 Grand Rapids First Assembly of God  
 Brian Granger  
 Granger Construction Company  
 Roger and Carole Grates  
 Bruce Grauf  
 Christopher and Colleen Graveline  
 LaDean Grayce  
 Great Lakes Bay Health Centers  
 Great Lakes Bay Regional Alliance  
 Great Lakes Safety Training Center  
 Mr. Draymond Green  
 Ashley M. Green  
 John E. Green Company  
 Mr. and Mrs. Jimmy Greene  
 Harold and Sherri Greene  
 Michael Greene  
 Loyce Greene  
 Greenop's Lawn & Landscaping Inc.  
 Karen Gregor  
 Anne and Todd Gregory  
 Denise Gremel  
 Shawn Gresley-Pietz  
 Wendy and Robert Groll  
 Angela and Matthew Gronda  
 Charles Gross

Pamela Grueber  
 Dr. George and Jane Gugino  
 Marie Guimond & David Tuskey  
 Marty and Ray Guzy  
 Jay Haas Contracting  
 George and Kathleen Hagen  
 Pamela Hair  
 Todd and Lumpeny Hall  
 Wilson Hall  
 Alan Hall  
 Jackie Hall  
 Kim Hall & Associates, Inc.  
 Dr. Eugene J. Hamilton  
 The Hamilton Street Pub, LLC  
 Hamilton's RV of Saginaw, Inc.  
 Jim and Carolyn Hammis  
 Keith and Pat Hammis  
 Donna Hammond  
 Hammond Graphics  
 Michael Hanisko  
 Michael and Susi Hanley  
 Hanwha  
 John Harb  
 Mark Hardy  
 Roxanne Harless  
 Janet and Richard Harris  
 Lynne Harris  
 Barbara and John Harris  
 Law Office of Norman S. Harrison  
 William and Kristine Hartl  
 Nicole Hartwick  
 Edwin and Sandra Harvey  
 Barbara and Gary Harvey  
 Alan and Terri Haswell  
 Katherine and David Hatton  
 JoAnn Haveman  
 Linda and Robert Hawke  
 Thomas and Gail Hawley  
 Jim Hayes  
 David Hayes  
 Melissa Hayes  
 Judge Lynda L. Heathscott  
 Robert and Diane Heaverich  
 Hebert Memorial Scholarship Fund  
 Melissa Hebl  
 Hecht Feed Supply  
 Carole Heiderer  
 Thomas and Kathleen Heidger  
 Sheilah Heilbronn  
 Alfred Heilman  
 J. R. Heineman & Sons, Inc.  
 Hella Corporate Center USA, Inc.  
 David and Ruth Helpap  
 Hemlock Semiconductor Corporation  
 Hemmeter Elementary School  
 Kelly and William Hendrick  
 Colleen and J. Phillip Hendrick  
 Connie Jo and Kieran Hendrick  
 R. C. Hendrick & Son, Inc.  
 William and Janet Heney  
 Patrick and Marie Ann Hengesbach  
 Velver Henry  
 Steven Hensley  
 Vanessa Brooks and Herbert Herd  
 John and Brenda Hereza  
 Heritage Square Neighborhood  
 Association  
 Donald J. and Ann Marie Herm  
 Gloria and Alex Hernandez  
 Jessica Hernandez  
 Pete and Sally Hervey  
 Leah and John Herzog  
 Andrea Hewett  
 Hi-Tech Steel Treating, Inc.  
 Joe Hickey  
 Tom and Kathy Hickson  
 Tom Hickson, Jr.  
 Delilah Hidalgo  
 Melissa and Scott Higgins-Yaw  
 Leslie Hildebrandt  
 Laura and Matthew Hill  
 Clark Hill, PLC  
 Judith Hillman  
 Virginia A. Hines, PhD  
 Candye Hinton  
 Lori and Clint Hodo  
 Ethel Hoenle  
 Ann and David Hoffman  
 Valerie Hoffman  
 Arlene Hoffman  
 Barbara Hoffman  
 Debra Hoffmaster  
 Jane Hohensee  
 Todd and Julie Hohwart  
 Paula Holevac  
 Isabella and Robert Holmes  
 Smallwood and Linda Holoman  
 Tina Holp  
 Holy Mission Ministries  
 James and Sharon Hooper  
 Mr. and Mrs. Raymond R. Hoppe  
 Marc Hopps  
 James and Linda Horan  
 HORIZONS Conference Center  
 Connie Horn  
 Deborah Horne  
 Andrew Horton  
 Houghton International  
 Kimberly Houston  
 Mr. David Howard  
 Linda Howard  
 Cheryl and William Howard  
 C. Thomas and Judy Howe  
 Ronald and Charlotte Huebner  
 Brian and Amy Huebsch  
 Dick Humphreys  
 Diane and Robert Hungerford  
 Danae Hunt  
 Huntington  
 Ruth and Thomas Hurst  
 David and Barbara Huston  
 IBM Corporation Matching Grants Program  
 The Iles Schropp Group  
 Iles Charitable Trust  
 Independent Bank  
 Infineon Technologies  
 Dr. and Mrs. Michael Ingram  
 Angie and Jayson Irish  
 Frances Irvin  
 Willie Irvin  
 Isabella Bank  
 J & R Home Improvements  
 Jack's Tree Service, Inc.  
 Brian and Lisa Jackson  
 Judy Jackson  
 Keithan Jackson  
 Marion Jackson  
 Scott and Nijole Jackson  
 Serina Jackson  
 Severine Jackson  
 Timothy and Monica Jackson  
 Larry and Judy Jacob  
 Ed and Kate Jacobs  
 Bethany and Timothy Jacques  
 Sue and Raymond Jaenicke  
 Mark Jaffe  
 Jennifer and David Jaffe  
 Ruth Jakes  
 Lou Ann and James Jakes  
 Steven and Gwynne James  
 James and Barbara Jameson  
 Ann Janson  
 Jcfriend, LLC  
 Karen Jeans  
 James and Anita Jenkins  
 Jeffrey Jenkins  
 Barbara Jensen  
 Jim and Cathy Jesko  
 Jennifer and Jose Jimenez  
 JinMyung Industries  
 Clayton Johnson  
 Roberta Johnson  
 Craig and Jennifer Johnson  
 Alvern Johnson  
 Nancy Johnson  
 Gregory Johnson  
 Johnson Law, PLC  
 Mark and Renee Johnston  
 Jerusha and William Joiner  
 Jomo, LLC  
 Raymond and Henrietta Jones  
 Rex and Kristie Jones  
 Jennie and Robert Jordan  
 Martha Ann Joseph  
 JRB Enterprises  
 Fred and Gretchen Jungnitsch  
 Junior League of the  
 Great Lakes Bay Region  
 Randy and Pam Jurrens  
 Sarah and Michael Jury  
 The Jury Foundation  
 John Kaczynski  
 Leo A. and Emelie Kahan  
 Charitable Foundation  
 Melanie Kahl  
 Susan and C. Patrick Kaltenbach  
 James and Emilie Kanitz  
 Mary and Darryl Kartz  
 Lois Kay Contracting Company  
 Sharon and James Kaylor  
 Elynor Kazuk  
 Daniel Keane  
 Peter and Mary Jane Keech  
 Sarah and Brian Keenan-Lechel  
 Laura and Paul Kegel  
 Tim and Agnes Keinath  
 Don and Judy Zehnder Keller  
 Steven and Mary Kelly  
 James and Stacy Kelly  
 Molly and Dwight Kelsey  
 Richard and Janice Kemerer  
 Kendra J. Kempf  
 Pat and Lisa Kenny  
 Alan and Holly Kern  
 Christa Kern  
 Dave Kern  
 Catherine and Kevin Kerns  
 Carrie Kessel  
 Susan Kessler  
 Ruqiyya Khanum Foundation  
 Zachery Kidder  
 Kimball Electronics, Inc.  
 C. G. and Pam King  
 Vera King  
 Harold King  
 Kelly King  
 Wally King's Service, Inc.  
 Kingdom Life Ministries  
 Kelly and Joseph Kiss  
 Kiwanis Club of Saginaw  
 Mary Klein  
 Joni and Thomas Klesper  
 Diane and Floyd Kloc  
 Kathleen L. Klonowski, D.D.S.  
 Leonard Klosowski  
 T. Michael Knack  
 Ruth Ann Knapp  
 Janice Knight  
 Josh and Kristin Knoll  
 Dr. Victor and Caroline Knowlton  
 Catey Knowlton  
 Jin Beom Ko  
 Marie and James Koch  
 Thomas and Barbara Kochendorfer  
 Steve and Lisa Kocks  
 Kelly and Aaron Kocsis  
 K. Koenig  
 Nancy Koepke  
 Rosemary Kohut  
 David and Susan Kolat  
 Bryan J. Konieczka and Mary K. Baukus  
 Catherine Konn  
 Rhonda and Steven Korzecki  
 Dr. and Mrs. John M. Kosanovich  
 Holli and Robert Kostick  
 Kovacs Engineering  
 Linda Kowalewski  
 Edith Kowalewski  
 Edward and Mary Kowalewski  
 Debra Kowalewski  
 John Kowalewski  
 James Kowalski  
 Angela and Jason Kowalski  
 Krayden, Inc.  
 Patricia and Michael Kremin  
 Theresa and Jim Kretz  
 Lisa M. Krieger  
 Barbara A. Krueger  
 Joseph Krueger  
 Paul and Jeanette Krukowski  
 Douglas and Edith Kueffner  
 Daniel and Suzanne Kuhn  
 John and Nancy Kunitzer  
 Walter A. Kushion  
 Thomas and Judy La Manna  
 Sidney and Carol LaBrake  
 Marcia Lacker  
 Barbara LaFlair  
 Kristen Lake  
 Lake State Railway Company  
 Terry Lally  
 Phillip Lambert, M.D.  
 Mary Lane  
 Traci Langlois  
 Kristin Langrill  
 Alec and Gayle Laorr  
 Daniel and Mary Lapan  
 Gregory Largent and  
 Anna Leppert-Largent  
 J. Allan and Betty Larsen  
 James Larsen  
 Sara Jane and Paul Larsen  
 Michele Laskey  
 Shawn and Lindsay Laskowski

Anne K. Laundra  
 Glendorah Lawrence  
 Pauline Lawrence  
 Mr. and Mrs. John Learman  
 LeBlanc Trucking  
 Caroline Lechel  
 Jan LeCureux  
 Janet and Ken LeCureux  
 Larry and Mary Kay Leddy  
 Sherry and Michael Ledtke  
 Geraldine LeFevre  
 LeFevre & LeFevre, PLLC  
 Douglas and Marilyn Leffler  
 Legghio & Israel, PC  
 Brandy and Michael Lennox  
 Paula Lentine-Vining  
 Teresa and Robert LeRoy  
 Sharon and Richard Leslie  
 Joyce and Larry Lethorn  
 James and Jane Levi  
 Delores Lewis  
 Linda Lewis  
 LG Innotek  
 LH Stamping Corporation  
 Margaret Lian  
 Linda Lietaert  
 Phyllis Lietzke  
 Lorna and Thomas List  
 Betsy Little  
 Marcia Pendell Liu  
 Local Union No. 557  
 Marshall and Marilyn Longtain  
 Robert and Catherine Looby  
 Lor-Jett, Inc.  
 Deirdre and Don Lorenz  
 Arlene Loucks  
 Rachel Louise Seaver  
 Benjamin Love  
 Zebedee Love  
 Pete Lover  
 Marilyn Ludgin  
 Marlene and Alvin Luplow  
 Lindsay Lydy  
 Lyon Gear & Machine  
 Robert I. MacArthur  
 Cassie MacGregor  
 Tim and Terry MacKay  
 Mr. and Mrs. William R. MacKay  
 Carol Mackie  
 Nancy MacRae  
 Macy's  
 Catherine Madigan  
 Joseph and Kristan Madison  
 Magma Gems  
 John and Martha Mahar  
 MAHLE Industries, Inc.  
 Maier & Associates Financial Group, Inc.  
 Meredith D. Main  
 Ellen Main  
 Jeanne Mallak  
 Matthew Manion  
 William Mantle  
 A. Michael Manzoni, DVM  
 March Coatings, Inc.  
 Cynthia Marcoux  
 Andrea Marcus  
 Shelly Marner  
 Ruth Marsh  
 Anitra Marsh  
 Thomas Marsh  
 Iris and Albert Marteja  
 Jeffrey and Jane Martin  
 Alicia Martinez-Guevara  
 Katherine Mathews  
 John and Linda Matuzak  
 Nino and Phyllis Mauro  
 Brian and Rebecca Maxwell  
 Betty and John Mayer  
 Caroline McBride  
 Connie McCarthy  
 Maria McCarville  
 Sheri McCauley  
 Janet and Floyd McClintock  
 Curtis and Jane McClure  
 Linda McCune  
 Mavis and James McDaniel  
 Barbara McDonald  
 Denise and Thomas McDonald, Jr.  
 Violet and Edward McGarry  
 Renee McGregor  
 Mark and Judith McInerney  
 Mari McKenzie and Jeffrey Roberts  
 Marc and Amy McKenzie  
 Richard and Mary McLaughlin  
 Charles McMillan  
 Samuel McMillan  
 Barbara McMillan-Hargrow  
 Sharril & Jeffrey McNally  
 William F. McNally Family Foundation  
 Linda and Robert McNier  
 Douglas McQueen  
 William J. McQuillan, DVM  
 Sandra McTaggart  
 Victoria Meacham  
 Marion and Terry Meacham  
 Sandra Meacham  
 Michael Meath  
 Meek Charitable Lead Trust  
 Angela and Christopher Mehring  
 Debra Melkonian  
 Kurt and Roxanne Menapace  
 David and Nancy Menapace  
 Roy and Genevieve Mendoza  
 Aly Merchant  
 Merchant Foods, Inc.  
 Merck & Company, Inc.  
 Merls Tavern, LLC  
 Jan and Guy Merriam  
 Merrill Community Spirit Committee  
 Merrill Lynch & Company Foundation, Inc.  
 Merrill Lynch, Pierce, Fenner, & Smith, Inc.  
 Merrill Technologies Group  
 Andrea Mertz DDS, F.A.G.D.  
 Betty Mertz  
 Theodore and Janet Metiva  
 Scott Metiva Agency, Inc.  
 Jan and James Meyer  
 Lisa and Dale Meylan  
 Gayle and Joseph Michalski  
 John and Patricia Michalski  
 David and Alison Michelson  
 Jennifer Michelson  
 Michigan Advanced Neurology Center, PLLC  
 Michigan Air Products  
 Michigan CardioVascular Institute, PC  
 Michigan CAT  
 Michigan International Sales  
 Michigan Pipe & Valve, Inc.  
 Michigan Truck Spring of Saginaw, Inc.  
 Tom Middlin  
 Midwest Electric, LLC  
 Midwest Iron & Metal Company  
 Hector and Carol Mier  
 Jon Milburn  
 Mr. and Mrs. James W. Miller  
 Timothy and Sandra Miller  
 Sara and Tyler Miller  
 Terry and Susan Miller  
 David Miller  
 Daniel and Patricia Miller  
 Sharon and Dennis  
 Mary Jo and Robert Miller  
 Miller Canfield  
 Frances Goll Mills Fund  
 Mary Milne  
 John Milne  
 James and Lori Milroy  
 Miss Saginaw County Scholarship Pageant, Inc.  
 Yoneko Miyamoto  
 MLS Foundation  
 Mobile Medical Response, Inc.  
 Ms. Jennifer Moeller  
 Roger Moiles  
 Jacob Monroe  
 Ann and David Moore  
 Sharon and Thomas Moquin  
 Raeann Morden-Krauss  
 Guy and Louise Moretti  
 Pamela Moretuzzo  
 Donald and Roberta Morey  
 Morgan Stanley C/O Cybergrants, Inc.  
 Theodore Morgette  
 James Morgrette  
 Mary and David Morin  
 Morley Companies, Inc.  
 Emily and Christopher Morse  
 Gene and Yoko Mossner  
 Charles Stewart Mott Foundation  
 Daniel Mrozinski  
 MSU Alumni Association of  
 Saginaw County  
 Tom and Evelyn Mudd  
 Charles E. Mueller, M.D.  
 Wayne and Helen Mueller  
 Bill and GERALYNN Mulders  
 Bryan and Mari Mullen  
 Dennis and Debra Murphy  
 Jeanne Murphy Causley  
 Myles Murray  
 Mursix Corporation  
 Deborah S. and Gerald Myczkowiak  
 Shirley Myers  
 Walter and Elizabeth Nagel  
 Regina and Edward Napierala  
 Jack and Janet Nash  
 National Financial Services, LLC  
 Nationwide Service Center, Inc.  
 Net Shaped Solutions  
 Network for Good  
 James and Lori Neumeyer  
 New Beginnings Real Estate  
 New Life Christian Fellowship  
 New York Life Insurance Office of  
 Government Affairs  
 Grace Newwine  
 Nexteer Automotive  
 Niagara LaSalle  
 Jimmie Nichols  
 Allen E. & Marie A. Nickless  
 Memorial Foundation  
 Rose Marie Nickodemus  
 Susan Nielsen  
 Eric and Karyn Niemi  
 Ninth Street Community Church  
 Christopher and Julie Noel  
 Robert and Sheila North  
 Northmoor Neighborhood Association  
 Carl and Virginia Norton  
 Paul Novak  
 Jacqueline and David Novak  
 Cherie Novak  
 Gene and Shirley Nuckolls  
 Diane M Nye  
 John O'Connor  
 O'Connor's Home Decorating Center, Inc.  
 Matthew O'Dell  
 Dr. David B. O'Donnell  
 OCS, Inc.  
 John and Susan Oczepek  
 Christina and Joshua Ode  
 David & Terry Oeming  
 Therese-Marie and David Oeming  
 Ogletree, Deakins, Nash,  
 Smoak & Stewart, P.C.  
 Old Town Christian Outreach Center  
 Oldford & Associates, Inc.  
 H.C. Olsen & Associates  
 Terence Oneill  
 Mr. and Mrs. David A. Opalewski  
 Optimist Club of Saginaw  
 Caroline Orsini  
 Ronald and Martha Osgood  
 Marlene and Tom Osmond  
 Jaime Otto  
 Dawn Ozark  
 R. James and Janet Paas  
 Cynthia B. Pace  
 Mary Pache  
 Robert and Carla Paetz  
 Stephanie and Marc Panzer  
 Jacqueline and David Papak  
 Patricia and Gregg Pappas  
 Kimberly Papst  
 Craig Paquette  
 Audrey Parker  
 Nicholas Parrent  
 Pat's Food Center  
 Janet Patrick  
 Gary and Nancy Patterson  
 Shari L. Kennett and R.T. Paullin, III  
 Trudy and David Peitsch  
 Jean Pendell  
 Lloyd and Lynn Pender  
 Elizabeth and Edward Perozek  
 Ms. Terri Perry  
 Helen Perry  
 Valentina Petrusha  
 Pfizer Foundation  
 Ryan and Jamie Pierce  
 Michelle Pincus  
 Kayla and Jason Pionk  
 Tamaara Piquion  
 Barry Playford  
 Plumbers & Steamfitters Local 85  
 Thomas and Ann Pohlman  
 Police Officers Association of Michigan  
 Roberta and Charles Polzin  
 Melissa and Thomas Polzin  
 John and Jan Poma  
 Pontiac Coil  
 Cheryl Popielarz  
 Teri Popoff  
 Chad and Lori Posey  
 Donna and Edward Posluszny

Power of Dad Ministries  
Mary Ellen and Dennis Poyhonen  
Terry and Robert Pratt  
Maija and Larry Preston  
Joanne and Richard Prevost  
Duane and Dena Prime  
Primed To Paint, LLC  
Dennis and Nancy Princing  
Susan and Andrew Prine  
Janet and William Pringle  
Prism Plastics, Inc.  
Pro Med Billing  
Promax Engineering, LLC  
Jack and Lynne Provenzano  
Donna Provenzano  
Terry and Carolyn Pruitt  
Public Libraries of Saginaw  
Mark Pulte  
David Puskar  
Donald Pussehl  
Dr. Robert R. Puszykowski  
Michael R. Puszykowski  
Qualified Staffing  
Jay Qualman  
Jeannie and Robert Quinn  
Dr. Zakir and Faryal Qureshi  
R & R Ready Mix, Inc.  
R & S Medical Management  
Kaye and Charles Wilson  
Judith Raines  
Drs. Sundhar and Kala Ramasamy  
Ramcel Precision Stamping and  
Manufacturing  
Jon and Lisa Rames  
Gilbert Ramon  
Ann Ransford  
Julie and Bryant Rappuhn  
Trevin Rard  
Tracy and Gerald Rauch  
Gregory and Robin Rauner  
Willard and Constance Reading  
Sandy and Duncan Redfield  
Patricia and Richard Redifer  
Jim Redmond's Automotive Service, Inc.  
Richard & Mary Reed  
Christian Reer  
Lori Reetz  
Region VII Area Agency on Aging  
Jack and Connie Rehmann  
Tyler and Rachel Reid  
Janet and Jerome Reif  
Sylvia Reimus  
April Reinhardt  
Karl Reis  
Courtney Reitz  
Remer Plumbing, Heating &  
Air Conditioning, Inc.  
Mary Lou and David Rendon  
Jose Rendon  
Patricia G. Rennert Irrevocable Trust  
Timothy Rex  
Monica and Guadalupe Reyes  
Angela Reyes-Barnella  
Roger and Mary Reynolds  
Jacqueline and Robert Richards  
Mary Richardson  
Nadine Richardson  
Lindsay Richardson  
Jean and Robert Richardson  
Richardson Chevrolet Buick, Inc.  
Carolyn and Richard Riefe  
Rifkin Scrap Iron & Metal

Paul Rigda  
Linda and Bruce  
Riverside Family Restaurant  
Brian and Cynthia Rivet  
John and Barbara Roberts  
Connie Roberts  
Donna Robinson  
Rock Redi-Mix, Inc.  
Rock The Island  
R. George and Jeanette Roe  
Mr. George Roe  
Norma and Walter Roenicke  
Ann and Dennis Rogers  
Jeffrey and Sherry Rogers  
Glenda Rogers-Gilliam  
Rohde Brothers Excavating  
Marilynn and Gerald Romanowski  
Ron Thomas Memorial Golf Classic  
Jessica and Andrew Rood  
Kevin M. Rooker  
Anne and Abraham Rossi  
Rotary Club of Bay City Charitable Foundation  
Rotary Club of Saginaw Foundation  
Timothy T. and Kimberly L. Royle  
Mary and Scott Ruggles  
Robert and Nancy Ruh  
George and Kimberly Ruhana  
Robert Ruhl  
Gary and Kathy Rummel  
William and Annette Rummel  
Runners Athletic Company  
Kimberly Running  
Emily Rupp  
Dean Rusch  
John and Susan Rush  
John and Barbara Russell  
Brian Russell  
Rosemary and Carl Ruth  
Ann and Scott Rutherford  
Amy & Russell Kato  
S.C. Johnson Company  
Dennis and JoAnne Saari  
Dana Saenz  
Alan and Kathryn Sagers  
Saginaw Area Foundation for Eye Care  
Saginaw Bay Underwriters  
Saginaw Community Foundation  
Saginaw Control & Engineering, Inc.  
Saginaw Country Club  
Saginaw County Chamber of Commerce  
Saginaw County Community  
Mental Health Authority  
Saginaw County Landlords Association  
Saginaw County Lawyers' Auxiliary  
Saginaw County Sports Hall of Fame  
Saginaw Education Association  
Saginaw Health Plan  
Saginaw Intermediate School District  
Saginaw Ladies Auxiliary Post 1566  
Saginaw Medical Federal Credit Union  
Saginaw Plumbing & Steamfitting  
Saginaw Public Schools Foundation  
Saginaw Symphony Association  
Saginaw Township Business Association  
Saginaw Township Community Schools  
Saginaw Township Community  
Schools Foundation  
Saginaw Township Education  
Association c/o MEA  
Saginaw Township Police Officers'  
Association  
Saginaw Valley Agricultural Association

Saginaw Valley Ford Lincoln  
Saginaw Valley GLBT Group, Inc.  
Saginaw Valley State University  
Saginaw Valley Walk-In Clinic, PLLC  
Saginaw Wheels And Deals  
St. Charles Area Museum  
St. Charles Athletic Association  
St. Charles Community Schools  
Foundation  
St. Charles Family Dentistry, PC  
St. Charles Lions Club  
St. Charles Music Association  
St. Francis Home  
St. Mary's Cement Company  
Saint-Gobain  
Salvi, Inc.  
James Salwasser  
Deborah Sanchez and Dean Taylor  
Richard Sanders  
Samuel Sanderson  
Sanford Food Store, Inc.  
John and Shirley Sangster  
Vermell Sangster  
Judy and Galileo Sarmiento  
Nancy and L. Sarosi  
Elizabeth Satkowiak  
Rev. P. David Saunders  
Harold and Elinor Saunders  
Sharon Sawyers  
Theresa and Harold Sawyers  
Leonard and Colleen Schaeding  
Janeen Schaeding  
Joseph and Heather Schaefer  
Mary Kay Schaeffer  
David and Kristine Schaeffer  
Schaeffler Group  
Vicky Schafer  
Bill and Mary Jo Scharffe  
Jennifer Schau, DDS  
Christine and Bradley Scheidhauer  
Autumn Scherzer  
Angela Scherzer  
Scherzer Builders  
Wayne and Denise Squanda  
Amy Schlegel  
Kristen Schlegel  
Jean and Elroy Schluckebier  
Zachary Schmid  
Robert and Mary Schmidt  
Jill Schmidt  
Liliana Schmidt  
William and Tammie Schmitt  
Matthew and Kelli Schmitz  
Nancy Schneider  
Janice Schneider  
Samantha Schnepf  
Dennis and Kathleen Schrader  
Randy and Jean Schrader  
Kenneth and Donna Schram  
Judith and Randy Schram  
Arleen Schrank  
Nellie Schrantz  
James Schriber  
Scott and Lynne Schropp  
Wesley Schropp  
Kim Schuette  
Beverly Schultz  
Jeri Schultz  
Sheri L. Schumann Tax & Accounting, Inc.  
Sandy Schwan  
Kevin and Jodi Scorsone  
Karyl and Hon. Bruce Scorsone

Scottish Inn, Inc.  
Joyce Seals  
Eugene and Joyce Seals  
Fredrick and Brenda Seamer  
Richard Sebring  
Second Baptist Church  
Josephine and J.R. Seemann  
Renee and Kenneth Seibert  
Daniel and Cindy Seitz  
Gregory Semp  
Chad and Julie Severson  
Shaheen Family  
Rumi Shahzad and Jennifer Loo  
Kenneth Shammo  
Kevin and Cari Shanks  
Gregory and Karen Shatley  
Janet and Barry Shaver  
Amber K. Shaw Counseling, PLLC  
Shelby Insurance Agency, Inc.  
Laurie Shell  
John and Martha Shelton  
Shields Men's Club  
Marian Shih  
Butch Shinkel  
Shinners & Cook, PC  
Shively Bros  
Erik and Kristie Shoemaker  
Jeff Shrum  
Mary and Mark Shuell  
Virginia Sibilsky  
Rolisia Siebert  
Sierocki Family Trust  
James and Nancy Silk  
Silver Crown Development, Inc.  
Lawrence and Linda Sims  
Lynn and Tracy Sipes  
John and Connie Sivey  
Amy and Bradley Sizelove  
Gail Skerratt  
Skipworth Murphy Circle  
Carol and David Skolnik  
Suzanne and Edwin Skrelunas  
Mike Slasinski  
Ann Slater  
James and Lorna Slick  
David and Mary Small  
W. Smillie  
Smillie Plumbing & Heating, Inc.  
Smillie Storage  
Lucy Allen-Smith  
Burriss and Katherine Smith  
Sherrill Smith  
Larry and Mary Lou Smith  
Kathleen Smith  
William and Mary Smith  
Sue W. Smith  
Doud Smith & Wagner, PLC  
Barb Smith Suicide Resource and  
Response Network  
Michael Smithers  
SMWIA Local 7-Zone 3 Youth-To-Youth  
Margaret Snelling  
Cathy J. Snyder  
Sodexo, Inc. & Affiliates  
Otto & Colette Sonefeld  
James Sonnenberg  
Sons of Italy, Lodge 2456  
Laura and Kim Sorget  
Catalina Soto  
Ronald and Noreen Southgate  
Southwest Saginaw Neighborhood  
Association



Marlene Sova  
 Spartan Acres, Inc.  
 Spectrum Legal & Consulting, PC.  
 Robert and Jane Spence  
 Herb and Kathi Spence  
 Mary H. Spence  
 Spence Brothers  
 Spicer Group  
 Michelle Sprague  
 Thomas Sprott  
 Karen and Darren St. Souver  
 St. Stephen and Carmen Park  
 Neighborhood Association  
 The Stable of Saginaw, Inc.  
 Gail and John Stallings  
 Joanna Stamann  
 Kathryn Stanley  
 Joseph and Katherine Stanulis  
 State Bank  
 State Farm Insurance Companies –  
 Raymond McConnell  
 Margaret Steele  
 Michael T. Stelter & Associates  
 Stertz & Weaver, PC.  
 Morrie and Julie Stevens  
 Morrison and Dawn Stevens  
 Peter and Casey Stevens  
 Casey and Peter Stevens  
 Jill and Tom Stevens  
 Ron and Kathy Stewart  
 Dorothy Stinson  
 Michael Stoddard  
 Brian Stoffel  
 Jeryl Stoltz  
 Barbara and Michael Stretavski  
 Stretch Limo  
 R. Stringfield  
 Bob and Tish Stroebel  
 Leticia and Robert Stroebel  
 Jim and Marie Stuart  
 Leslie Sturm  
 William and Amy Sulkanen  
 Martin Sullivan  
 Donna Sullivan  
 Michael Sullivan  
 James and Margaret Summerfield  
 James and Suzette Summerfield  
 Karen and Alan Sumption  
 Survey Solutions, Inc.  
 Surveying Solutions, Inc.  
 Ronald and Catherine Sutton  
 Dolores Sverid  
 Rachel Swanson  
 Joyce and John Swartz  
 Elaine and Randall Sweigart  
 Tim and Julie Swieczkowski  
 Daniel and Christine Szatkowski  
 Taigene Electric Machinery  
 Company, Ltd.  
 Gerald and Joan Talbot  
 Cynthia and Alan Talbot  
 Calvin Talley  
 Mary and Peter Tallon  
 Tanstaaf, LLC  
 Anne Tapp  
 A.J. and Tena Tarachas  
 Kyle Tarrant  
 Matthew Tarrant  
 Russ and Sue Taylor  
 Jeffrey and Shelly Taylor  
 Keith and Heidi Teachout  
 Team One Credit Union  
 Dawn Tenuyque  
 Linda and David Terburgh  
 Nancy and Ken Tesauro  
 Jacalyn and Arthur Thayer  
 Lois Theile  
 George and Stella Thelen  
 Al and Beth Thieme  
 Jane & Edward Thom  
 Darryl and Marcia Thomas  
 Helen Thomas  
 Alexis S. Thomas  
 Thomas Orthodontics, PC  
 Thomas Township Library  
 Clarence Thompson  
 Cynthia Thompson  
 Marc Thompson  
 Mamie and Odail Thorns  
 Thumb National Bank &  
 Trust Company  
 TIC International Corporation  
 Christopher and Cherlyn Tilot  
 TimkenSteel  
 Leslie and Marion Tincknell  
 TN Tennessee, LLC  
 Katherine and Clyde Tobin  
 Carol and James Todd  
 Paula Todd  
 Larry and Gail Toft  
 Mary and Allen Topa  
 Andrea Torres  
 Tour Fit Custom Clubs Inc.  
 Trademark Commercial Group  
 Susan Trapp  
 Brad Traver  
 Michael and Angela Trembley  
 Tri-Star Trust Bank  
 Martha and Gust Triantafillou  
 Hon. Manvel Trice, III  
 Carol Troester  
 Amy Trogan  
 Thomas F. Trombley  
 Deborah Trombley  
 A. Douglas Trombley  
 Truist  
 Letricia Truss  
 Rita Truss  
 Judith and Jay Tucker  
 Danny and Kathy Turner  
 Reginald Turner  
 Shelley and Gregory Turner  
 Alice E. Turner Memorial Trust  
 U.S. Sheet Metal, Inc.  
 UAW Local 668  
 UAW Region 1-D  
 Bridgette and Michael Uhrich  
 Underground Railroad  
 United Way of Greater Philadelphia  
 and Southern New Jersey  
 United Way of Midland County  
 United Way of Saginaw County  
 Unity in the Community  
 Neighborhood Association  
 Universal Bearings, LLC  
 Universal Pharmacy of Saginaw  
 Valley OB-GYN Clinic  
 Duane & Carol Van Benschoten  
 Elaine Van Buren  
 Bob and Debbie Van Deventer  
 Dorothy Van Dusen  
 M. Don Van Steenkiste  
 Duane & Carol VanBenschoten  
 Dale Vanconett  
 Peter and Christine VanDerwill  
 Holly VanGuilder  
 Pearl Vasher  
 Virginia Vaughn  
 Michael and Ann Vayre  
 Donna Veldman  
 Ricardo and Connie Verdoni  
 William Veresh  
 Bill and Wilma Verrette  
 Nicholas and Nicole Vescio  
 Victorious Believers Ministries  
 James and Janice Vieau  
 Michelle Viera  
 Alfred and Brenda Vinson  
 Elizabeth and Jack Visuri  
 Bob and Bobbi Vitito  
 Mitchell and Teri Vogeli  
 Karen M. Volk  
 James and Jane Vondette  
 Julie Vondette  
 Vondette Roofing  
 VTC Insurance Group  
 Frances Wachner  
 Ms. Sally A. Wade  
 Lori and Mitchell Wagner  
 Mary Jo Wagner and Karl Bihn  
 Wal-Mart Foundation  
 Christopher L. and Beth Poppe Walker  
 Steve and Kathy Walker  
 Jill and Scott Walker  
 Norma and Jack Walker  
 Wendy and Robert Walker  
 David and Claudia Wallace  
 Shirley Wallace  
 Yolanda Wallace  
 Bettina and Christopher Walsh  
 William E. Walter, Inc.  
 Victoria Wandmacher  
 Wanigas Federal Credit Union Employees  
 Joanne Ward  
 Ernest and Diana Ware  
 Lisa and David Warner  
 Warner Norcross & Judd, LLP  
 Elizabeth Washburn  
 Dennis Waske  
 Susan Waters  
 Burt Watson Chevrolet, Inc.  
 Alicia Watt  
 Thomas and Barbara Weadock  
 Judy Webb  
 Kimberly and Dennis Webber  
 Sally Anne Weber  
 Krista and Troy Weber  
 Michael Webster  
 Arthur Webster, Jr. Endowment Fund  
 Alyce and Daniel Wechter  
 Dr. and Mrs. Randall G. Weiss  
 Lawrence Wells  
 Keith and Kristen Wenzel  
 Kenneth Wenzel  
 Loretta Wenzel  
 Wepay  
 Pamela Werner  
 Jimmie and Beverly Westbrook  
 David and Ruth Westhoff  
 Karl Weyand, Jr.  
 David Whalen  
 Kim Whalen  
 Linda Whaley  
 White's Bar, Inc.  
 Sandra Whitley  
 Janice and Doug Wickes  
 Harvey Randall Wickes Foundation  
 Wickson-Link Memorial Foundation  
 Amy Widdis-Streeter  
 Kathryn Wiese  
 Nancy Wiese  
 Jeanne and Jerry Wilcox  
 Della Wilder  
 Kay Wilhelm  
 Ms. Jody Wilk  
 Kathleen Wilk  
 Joseph and Cathy Wilk  
 Mary Wilkinson  
 Willi's Sausage Company  
 Lee and Betty Williams  
 Dr. Antonio Williams, Sr.  
 Ron & Vanessa Williamson  
 Willis Towers Watson  
 Kenneth and Jacquelyn Willman  
 Wilson Realty Inc.  
 Kim and Ross Winchell  
 Rosalee Wing  
 Thomas and Carol Winkel  
 Wirt Financial Services, Inc.  
 Wisconsin Energy Conservation  
 Corporation  
 Stephen Witt Insurance Agency  
 Wobig Construction Company, Inc.  
 Edward Wojtkowicz  
 John and Marilyn Wolf  
 Jim and Terry Wolohan  
 Marcia and Michael Wolohan  
 Wolohan Family Foundation  
 Women of Colors, Inc.  
 Jeff Wood  
 Armell and Robert Woods, Jr.  
 Ralph Worthing  
 Bill and Carol Wright  
 Jennifer and Matthew Wright  
 Terri Wright  
 WTBARV  
 Fred Wydra  
 Alfonza and Marjet Wysinger  
 Ya Ya's Flame Broiled Chicken  
 Beverly Yanca  
 John Yancho  
 Barbara Yelle  
 Laura Yelsik  
 Yeo & Yeo CPAs & Business  
 Consultants  
 John and Irene Yeska  
 YMCA of Saginaw  
 Steven and Laura Yockey  
 Catherine York  
 Edward York  
 Your Cause, LLC  
 Jim and Julie Zanner  
 Ronald Zednicek  
 Michael Zehnder  
 Karen and William Zehnder  
 Martha Zehnder Keller  
 Zehnder's of Frankenmuth, Inc.  
 Herbert and Elizabeth Zeilinger  
 Catherine & Thomas Zemanek  
 Bradley & Sarah Ziegelmann  
 Ziggy Enterprises, LLC  
 Marilyn Zolinski  
 Zummer Trucking, LLC

# Leadership

## Board of Directors

### Executive Committee



**Mamie Thorns, Ph.D.**  
Chair  
Saginaw Valley  
State University



**Laura Yockey**  
Vice-Chair  
Chemical Bank



**Reneé S. Johnston**  
President & CEO  
Saginaw Community  
Foundation



**John Shelton**  
Secretary  
Zehnder's of  
Frankenmuth



**Todd Gregory**  
Treasurer  
1st State Bank



**Trish Luplow**  
Community  
Volunteer



**Felicia Rose-Barry**  
SCF Liaison  
Girl Effect/TEGA



**Keith Wenzel**  
United Way Liaison  
Chemical Bank



**Dana Tell**  
Community Liaison  
Team One Credit  
Union



**Smallwood  
Holoman, Jr.**  
Immediate Past Chair  
The Dow Chemical  
Company, retiree

### Directors



**Daniel Cannon**  
Cathedral of Mary  
of the Assumption



**Jill Dralle**  
Nexteer Automotive



**Hon. Elian Fichtner**  
70<sup>th</sup> District Court



**Victor Gomez**  
Caravan Facilities  
Management LLC



**Rob Kain**  
Hemlock  
Semiconductor



**Dr. Iris Marteja**  
Covenant Medical  
Group



**Jodi McFarland**  
Community  
Volunteer



**Tom Miller, Jr.**  
Saginaw  
Future, Inc.



**Kathy Stewart**  
Saginaw ISD



**Glynis Talley**  
Nexteer Automotive

# Committees

## Building Committee

Reneé Johnston *Chair, Staff*  
 Todd Gregory\*  
 Smallwood Holoman, Jr.\*  
 Jake Shiners  
 Herbert A. Spence, III  
 Mamie Thorns, Ph.D.\*  
 Laura Yockey\*  
 Becky Gerzseny *Staff*

## By-Laws Committee

Daniel Cannon\*  
 Gary Gudmundsen  
 Amanda Jovanovich  
 Susan Nielsen  
 Reneé Johnston *Staff*

## Community Improvement Initiative/ABCD Planning Committee

Trish Luplow\* *Chair*  
 Jeff Bookmyer *ABCD Planning Subcommittee Chair*  
 Denise Baldwin  
 Sheilda Braddock  
 Ellen Crane  
 Lillie Grays  
 Jessica Hernandez  
 Smallwood Holoman, Jr.\*  
 Amy Luplow  
 Kayla Petz  
 Pastor Christopher Pryor  
 John Stemple  
 Tom Trombley  
 Brian Jackson *Staff*  
 Reneé Johnston *Staff*  
 Kendra Kempf *Staff*

## Distribution Committee

Todd Gregory\* *Chair*  
 David Brown  
 Heidi Chasnis  
 Culli Damuth

Rose Ederer  
 Victor Gomez\*  
 Ana Hidalgo  
 Smallwood Holoman, Jr.\*  
 Tom Luplow  
 Tom Miller, Jr.\*  
 Gene Nuckolls  
 Jack Provenzano  
 Felicia Rose-Barry\*  
 Richard Watson, Jr.  
 Reneé Johnston *Staff*  
 Kendra Kempf *Staff*  
 Channing McKay *Staff*

## FORCE Youth Advisory Committee

Alina Alam  
 Annaleese Armstrong  
 Anna Baukus-Konieczka  
 Aliyah Beal  
 Khloe Beal  
 Elizabeth Boyd  
 Anthony Clark  
 Makenna Dawson  
 Maya Demand  
 Alannah Garrett  
 Zyk Hlavacek  
 Cecelia Hopkins  
 Emily Kinnicutt  
 Derek Kreszowski  
 Mikayla Lietzke  
 Kelsi Marcoux  
 Rowan Meddaugh  
 Emma Miller  
 Hannah Pan  
 Carrington Pryor  
 Jack Raines  
 Ella Smith  
 Lily Somers  
 Megan Sulkanen  
 Brandon Terry  
 Sydney Terry  
 Alyssa Vasquez

Carsyn Wachowicz  
 Hannah Webb  
 Ally Wehner-Bourdou  
 Emma Wilson  
 Nabil Zaman  
 Elian Fichtner\*  
 Channing McKay *Staff*  
 Kendra Kempf *Staff*

## Finance & Audit Committee

Heidi Bolger  
 Daniel Cannon  
 Morrall Claramunt  
 Jim Doane  
 Todd Gregory\*  
 Dave Hall  
 Trish Luplow\*  
 Jack Rehmann  
 Patricia Shaheen  
 Linda Sims  
 Bridget Smith  
 Mamie Thorns\*  
 Laura Yockey\*  
 Jerry Young  
 Becky Gerzseny *Staff*  
 Reneé Johnston *Staff*

## Giving Back Task Force

Brian Jackson\* *Staff, Chair*  
 Jacob Browning  
 Terry Collier  
 Danielle DeJaegher  
 Alyssa DePlonty  
 Brian Keenan-Lechel  
 Cat Kerns  
 Catherine Martinez  
 Chelsea Michael  
 Brian Miller  
 Kayla Petz  
 Felicia Rose-Barry\*  
 Rick Russell  
 Jared Sanderson

Cindy Schneider  
 Kendra Kempf *Staff*  
 Bryan Konieczka *Staff*

## Heroes for Kids

Reneé Johnston *Chair, Staff*  
 Rev. Hurley Coleman, Jr.  
 Carol Cottrell  
 Culli Damuth  
 Art Lewis

## Impact Investment Committees

*Bearinger Building*  
 Trish Luplow\*  
 Tom Luplow  
 Tom Miller, Jr.\*  
 Heidi Chasnis  
 Jim Milroy  
 Jim Doane  
 Becky Gerzseny *Staff*  
 Reneé Johnston *Staff*

## Saginaw Covenant Academy

Trish Luplow\*  
 Tom Luplow  
 Barbara Russell  
 Becky Gerzseny *Staff*  
 Reneé Johnston *Staff*

## Investment Committee

David Abbs  
 Fred Gardner  
 Smallwood Holoman, Jr.\*  
 John Kosanovich  
 Trish Luplow\*  
 Tim MacKay  
 Jim Milroy  
 Jack Rehmann  
 Barbara Russell  
 Harold Saunders  
 Becky Gerzseny *Staff*  
 Reneé Johnston *Staff*

## Nominating Committee

Heidi Bolger\* *Chair*  
 David Abbs  
 Culli Damuth  
 Mark Flegenheimer  
 Dave Hall  
 Kim Pavlik  
 Linda Sims  
 Richard Watson  
 Reneé Johnston *Staff*

## Scholarship Committee

Trish Luplow\* *Chair*  
 LeeAnn Martuch *Staff*  
 Reneé Johnston *Staff*

## Senior Citizen Enrichment Fund Committee

Mary Goedert *Chair*  
 Ruth Braun  
 Margaret Clark  
 Dr. James L. Mitchell  
 Barbara Roberts  
 Lawrence Toft, Jr.  
 Reneé Johnston *Staff*  
 Kendra Kempf *Staff*  
 Channing McKay *Staff*

## YWCA Fund for Women and Children Committee

Janet Crane *Chair*  
 Sheilda Braddock  
 Mary Bridgewater  
 Susan L. Crane  
 Culli Damuth  
 Minerva Rosales  
 Reneé Johnston *Staff*  
 Kendra Kempf *Staff*  
 Bryan Konieczka *Staff*  
 Channing McKay *Staff*

\*SCF Board Member

# Staff

Back (left to right)

## Mai Lee

*Program Officer*

## LeeAnn Martuch

*Program Officer*

## Bryan Konieczka

*Marketing & Communications Officer*

## Becky Gerzseny

*Director of Finance*

## Brian Jackson

*Director of Donor Services & Special Initiatives*

## Brittany Leal

*Finance Assistant*

## Kendra Kempf

*Program Officer/FORCE Coordinator*

## Vanessa Salogar

*Executive Assistant/  
Office & Building Manager*

Front (left to right)

## Reneé Johnston

*President & CEO*

## Channing McKay

*Program Assistant*

## Debra Shelton

*Youth First Director*



# For good. For ever.

Your gift to the Saginaw Community Foundation is a wonderful way to honor a friend or relative or to express your condolences. Instead of benefiting just one agency or cause, your gift will join many others and grow, creating an impact in our community, now and forever. Your gift will become a lasting, living legacy and help Saginaw Community Foundation make grants to a wide variety of charitable, educational, health and cultural programs throughout Saginaw County – and beyond.

## Thank you for your support!

Name(s): \_\_\_\_\_

Billing Address: \_\_\_\_\_

City: \_\_\_\_\_

State: \_\_\_\_\_ ZIP: \_\_\_\_\_

Phone: \_\_\_\_\_ Email: \_\_\_\_\_

Gift amount:  \$500  \$250  \$100  \$50  Other \$: \_\_\_\_\_

Direct gift to fund/program (if applicable): \_\_\_\_\_

Please charge my:  VISA  MasterCard  Discover  
 American Express

Credit card #: \_\_\_\_\_

Expiration date (MM/YY): \_\_\_\_\_ / \_\_\_\_\_

Print name as it appears on credit card: \_\_\_\_\_

Signature: \_\_\_\_\_

Please make checks payable to **Saginaw Community Foundation**

### MAIL TO:

Saginaw Community Foundation  
1 Tuscola St. • Suite 100B  
Saginaw, MI 48607

**Save a stamp. Donate online.**  
[saginawfoundation.thankyou4caring.org](http://saginawfoundation.thankyou4caring.org)



We thank our corporate sponsors for their generous support of Saginaw Community Foundation general operations.

## Chairman's Circle



## President's Circle



## Friends Circle

- |                             |                          |
|-----------------------------|--------------------------|
| 1st State Bank              | Isabella Bank            |
| Apple Mountain              | Michigan Sugar Company   |
| Ascension St. Mary's        | Network Services Group   |
| Bierlein Companies          | Rehmann                  |
| Foundation                  | Saginaw Valley State     |
| Burt Watson Chevrolet, Inc. | University               |
| Chemical Bank               | Shaheen Development      |
| Consumers Energy            | Spence Brothers          |
| Covenant HealthCare         | Stevens Worldwide Van    |
| The Dow Chemical            | Lines                    |
| Company                     | Tri-Star Trust Bank      |
| Fabiano Brothers, Inc.      | Warner Norcross & Judd,  |
| Garber Management           | LLP                      |
| Group                       | Wildfire Credit Union    |
| Glastender, Inc.            | Wolgast Corporation      |
| The Iles Schropp Group      | Zehnder's of Frankenmuth |
| Independent Bank            |                          |

## Want to join the Inner Circle?

There are various levels of public and printed recognition available – including introductions at events, listings in foundation publications and logos on our website – depending upon your membership level. For more information, call (989) 755-0545.



**Saginaw**

---

community foundation

---

1 Tuscola St., Suite 100B  
Saginaw, Michigan 48607  
(989) 755-0545  
saginawfoundation.org

Donate online at [saginawfoundation.thankyou4caring.org](https://saginawfoundation.thankyou4caring.org)